

Optimal Forest Management for Interdependent Products: A Nested Stochastic Dynamic Bioeconomic Model and Application to Bamboo^{1,2}

Tong Wu, David R. Just, C.-Y. Cynthia Lin Lawell, Ariel Ortiz-Bobea, Jiancheng Zhao

Abstract

Sustainable forest management is a complex dynamic problem, and an important issue worldwide. Forests supply the world's population with a variety of forest products, including renewable products such as fruits, nuts, and maple syrup that can be harvested at more frequent intervals than the trees themselves. When there is both uncertainty and interdependent forest products, the interaction between these two phenomena leads to a complicated set of trade-offs; developing a model at this nexus is the primary innovation of our paper. In particular, we develop a nested stochastic dynamic bioeconomic model of optimal forest management under uncertainty for interdependent products that differ in their growth cycles, rates of growth, lengths of growing periods, and potential harvest frequency. Our model enables us to assess the optimality of actual decisions made by forest managers and to develop a dynamic structural econometric model to understand the beliefs and perceptions that underlie and rationalize their management strategies. We apply our model to bamboo forests, which generate two interdependent products: bamboo shoots and bamboo stems. Our model has important implications for the sustainable management of forests worldwide.

Keywords: forest management, bamboo, dynamic model, tree crops, forest products

JEL codes: Q23

This draft: July 2025

¹ Wu: Cornell University; tw494@cornell.edu. Just: Cornell University; drj3@cornell.edu. Lin Lawell: Cornell University; clinlawell@cornell.edu. Ortiz-Bobea: Cornell University; ao332@cornell.edu. Zhao: Zhejiang Academy of Forestry; jiancheng68@163.com.

² We thank Qin Li, Lina Liu, Jianping Pan, and Boqing Yuan for helping us with the data collection; for providing us information about bamboo management; and for helping to host our visits to the Zhejiang Provincial Key Laboratory of Bamboo of Zhejiang Provincial Academy of Forestry, the Anji Forestry Technology Promotion Center, the Fumin Bamboo Shoot Specialized Cooperative, and the Tianlin Bamboo Shoot Specialized Cooperative, respectively. We thank Jianyang Lin, the Party Secretary for Xikou Forest Farm in Longyou County, for his exceptional support and organization for our interviews and short trips to the trade corporation in Longyou County. We thank Zhangjun Fei and Qiang Wei for invaluable information and discussions about Moso bamboo biology and growth. We thank Ryan Abman, H. Jo Albers, Jeff Arnold, Trevor Dean Arnold, Joe Balagtas, Levon Barseghyan, Rachid Belhachemi, Susanna Berkouwer, Léa Bou Sleiman, Jacob Bradt, Daniel Brent, Mike Buffo, Marshall Burke, Jonah Busch, Virginia Callison, Luming Chen, Lauren Chenarides, Sahan Dissanayake, Ida Djenontin, Victor Simoes Dornelas, Jackson Dorsey, Molly Doruska, Luc Esprabens, Zhangjun Fei, Paul Ferraro, Scott Francisco, Stephanie Fried, Teevrat Garg, Todd Gerarden, Dalia Ghanem, Matthew Gibson, Tengda Gong, Gautam Gowrisankaran, Gerrit Graper, Logan Hamilton, Nils Haveresch, Yurou He, Ted Helvoigt, Danae Hernández-Cortés, Alan Hinds, Jacob Holifield, Jennifer Ifft, Jerzy Jaromczyk, Akshaya Jha, Valerie Karplus, Aysegul Kilinc, Jim Kiniry, Cathy Kling, Samuel Kortum, Elena Krasovskaia, Yusuke Kuwayama, Katherine Lacy, Ashley Langer, Jim Lassoie, David R. Lee, David Lewis, Dingyi Li, Shanjun Li, Mengwei Lin, Jules Linden, Tianzi Liu, Clark Lundberg, Erin Mansur, Antonia Marcheva, Shana McDermott, Brandon McFadden, Michael Meneses, Carlos Muñoz Brenes, Anjali Narang, Ishan Nath, Matías Navarro Sudy, Harry Nelson, José Nuño, Frederick Nyanzu, Anthony Ponce, David Popp, Linda Powell, Jeisson Prieto, Yu Qin, Carson Reeling, Brigitte Roth Tran, Ivan Rudik, Seth Sanders, Michelle Segovia, Jonathan Scott, Chris Severen, Jeff Shrader, Shuyang Si, Peter Smallidge, Aaron Smith, Charlie Smith, Christophe Spaenjers, Robert Stavins, Jayen Tan, Vaíos Triantafyllou, Nick Tsivanidis, Calum Turvey, Wayne Walker, David Weinstein, Cade White, Matthew Wibbenmeyer, Peter Woodbury, Weiguang Wu, Tianming Yen, Shuo Yu, Terry Zhang, Hongyu Zhao, and Hui Zhou for detailed and helpful comments. We also benefited from comments from seminar participants at Cornell University, Natural Resources Institute Finland (Luke), and University of International Business and Economics (UIBE); and conference participants at the Western Forest Economists (WFE) Annual Meeting; the Northeastern Agricultural and Resource Economics Association (NARE) Annual Meeting; an Association of Environmental and Resource Economists (AERE) session at the Western Economic Association International (WEAI) Annual Conference; the Agricultural and Applied Economics Association (AAEA) Annual Meeting; the European Association of Environmental and Resource Economists (EAERE) Annual Conference; the University of Michigan conference on Forests & Livelihoods: Assessment, Research, and Engagement (FLARE); and the International Business Analytics Conference (IBAC). This research was supported by Cornell Center for Social Sciences Cloud Computing Solutions, and was conducted with support from the Cornell University Center for Advanced Computing. We received funding for our research from the USDA National Institute of Food and Agriculture (NIFA); a Cornell TREESPEAR Research Grant; and a Cornell University Graduate School Conference Grant. Our IRB protocol (Protocol Number: IRB0148123) was granted exemption from IRB review according to Cornell IRB policy and under the Department of Health and Human Services Code of Federal Regulations 45CFR46.104(d). Just, Lin Lawell, and Ortiz-Bobea are Faculty Fellows at the Cornell Atkinson Center for Sustainability. All errors are our own.

1. Introduction

The sustainable management of forests is a critical, timely, and important issue worldwide. Forests supply the world's population with timber as well as renewable non-timber forest products such as fruits, nuts, and maple syrup that can be harvested at more frequent intervals than the trees themselves. Unfortunately, the extent of the world's forests continues to decline as human populations continue to grow and the demand for food and land increases (FAO, 2005; Matthews, 2012; FAO, 2015). The need for sustainable forest management is particularly acute in developing countries such as China, which ranks among the top countries in terms of total forest resources, accounting for 25% of the world demand for forest products, but only 5% of the world's forest area (China Forestry and Grassland Administration, 2018), and is a country where deforestation is rampant (Démurger, Hou, and Yang, 2009).

In this paper, we develop a nested stochastic dynamic bioeconomic model of the management of forests that generate interdependent products that differ in their growth cycles, rates of growth, lengths of growing periods, and potential harvest frequency. Our model helps inform optimal forest harvest decision-making under uncertainty when forest products are interdependent, and the optimal strategies from the model can be compared with actual harvesting decisions. We also use our nested stochastic dynamic bioeconomic model to develop a dynamic structural econometric model to understand the beliefs and perceptions of forest managers that underlie and rationalize their actual harvesting decisions. We then use our model to assess sources of any potentially sub-optimal behavior, and suggest possible ways to address them. Our model has important implications for the sustainable management of forests worldwide, particularly when the forests produce products that can be harvested at more frequent intervals than the trees themselves.

When forest products are interdependent, the harvest of one product may affect the availability or growth of another product. For example, after harvesting a tree, one will no longer be able to grow or harvest products that grow on the tree. Furthermore, the timing of the harvest of one product may affect how it affects another product. For example, harvesting a tree may have less of an effect on the tree crops that season if the tree harvest takes place after the tree crops have already been harvested.

There is an interesting trade-off that arises for forest management under uncertainty. Under some forms of uncertainty (e.g., uncertainty in prices or precipitation), since harvests are

irreversible, there may be an option value to waiting before harvesting that is akin to the option value to waiting in most problems of investment under uncertainty (Dixit and Pindyck, 1994). Thus, all else equal, a forest manager facing these forms of uncertainty may find it optimal to delay harvests. On the other hand, the opposite happens when there is uncertainty over the survival of a forest product. Since any death, decay, or damage to the forest product is irreversible, all else equal, a forest manager facing the possibility that a forest product may die, decay, be damaged, or be infested by pests may find it optimal to harvest earlier. Thus, a forest manager under uncertainty faces two different types of irreversibilities – in harvests on the one hand; and in death or damage on the other – which leads to a tension between delaying versus expediting harvests. This tension is akin to the countervailing forces that arise in environmental policy adoption, wherein on the one hand, environmental policy may induce regulatees (e.g., firms, households, individuals, society) to make irreversible investments in order to comply, and there is an option value to waiting before making these irreversible investments; while on the other hand, delaying climate policy may lead to environmental damage that may be at least partially irreversible, which all else equal would favor expediting climate change policy and adaptation (Dixit and Pindyck, 1994).

When there is both uncertainty and interdependent forest products, the interaction between these two phenomena leads to a complicated set of trade-offs; and developing a model at this nexus is the primary innovation of our paper. On the one hand, reasons for a forest manager to harvest a forest product sooner rather than later may include high prices, low costs, and uncertainty over the survival of the product. On the other hand, reasons for a forest manager to delay the harvest of a forest product include allowing the product more time to grow in size, ripeness, or quality; uncertainty over prices; uncertainty over costs; uncertainty over precipitation; and allowing an interdependent product to grow.

We apply our nested stochastic dynamic bioeconomic model of optimal forest management under uncertainty for interdependent products to bamboo forest management in China. Moso bamboo (*Phyllostachys edulis*) is the single most important bamboo species in China, accounting for 74% of China's bamboo forest area ("China Forestry and Grassland Administration", 2018), as well as the third most important source of timber in China. Both bamboo shoots and bamboo stems are harvested as valuable products: bamboo shoots are a traditional food source, and bamboo stems are used as timber for paper making, flooring, and construction (Fu, 2001).

Optimal Moso bamboo management is a complex dynamic problem. Moso bamboo forest management involves making decisions about the timing and quantity of bamboo stem harvests and bamboo shoot harvests. Both bamboo stems and bamboo shoots are products that are sold on the market. Bamboo shoots prices vary day to day and are hard to predict, while bamboo stem price does not vary much over the course of a year. Bamboo shoots grow annually from a bamboo plant's underground rhizomes. Owing to their tender taste and to difficulties in harvesting underground shoots, winter shoots – which are young bamboo shoots that are just beginning to grow underground during the winter months – have a higher market price than the older spring shoots that emerge above ground during the later spring months. Bamboo shoots grow into bamboo plants after the end of spring shooting (Shi et al., 2013). Bamboo stems continue to grow each year until age 4-5 years (Zhang et al., 2014; Zhuang et al., 2015), while bamboo shoots only grow within a year. The harvesting of bamboo stems entails cutting down the bamboo plant, while the harvesting of bamboo shoots does not.

There are several trade-offs involved in determining the optimal shoots harvesting strategy that arise from uncertainty and the interdependence of shoots and stem. Reasons to harvest shoots sooner rather than later include: high prices, low costs, and uncertainty over survival. Reasons to delay shoots harvest, include: uncertainty over prices, and allowing shoots more time to grow. Reasons not to harvest shoots at all include: low prices, high costs; allowing shoots to grow into bamboo stem at the end of the year; and uncertainty over precipitation, which affects how many shoots will grow the following year from any stem that grow from unharvested shoots the previous year.

Likewise, there are several trade-offs involved in determining the optimal bamboo stem harvesting strategy. Reasons to harvest bamboo stem sooner rather than later include: high prices and low costs. Reasons to delay bamboo stem harvest include: low prices, high costs; allowing bamboo stem more time to grow; allowing shoots to grow annually from the bamboo plant; and uncertainty over precipitation, which affects how many shoots will grow from the stem remaining at the beginning of the year.

Various management styles have been found in bamboo forests in Asia, and the decisions of bamboo farmers can be complex and hard to understand (Yen, 2015).³ The actual bamboo stem harvests and bamboo shoot harvests decisions made by Chinese bamboo farmers may be

³ We discuss some of these management styles in more detail in Wu et al. (2025a).

unsustainable, leading to profit loss and a deterioration of the bamboo forest resource. The bamboo stem price has decreased significantly in recent years, and some bamboo plants have been left unharvested when matured due to high harvest cost. In contrast, winter shoots have sometimes been over-harvested for high profit, leaving too few shoots for future bamboo forest development.

To solve for the optimal bamboo stem harvest and bamboo shoot harvest policy, our nested stochastic dynamic bioeconomic model nests an inner finite-horizon within-year daily dynamic programming problem within an outer finite-horizon between-year annual dynamic programming problem. The inner finite-horizon within-year daily dynamic programming problem captures daily bamboo shoot growth within a year. The outer finite-horizon between-year annual dynamic programming problem captures annual bamboo stem growth from year to year. We use a Chapman-Richards growth function as our model for bamboo biomass accumulation. To incorporate uncertainty, we allow precipitation, prices, and the possibility of bamboo shoots death to all be stochastic.

We use an iterative approach to developing and refining our model to ensure that it best reflects reality. We use research and information on Moso bamboo from the biological sciences, economic data, and interviews we conducted with bamboo forest managers to develop our model and calibrate the parameters. We compare the optimal strategy given by our model to data on actual bamboo shoot and bamboo stem harvests we collected from multiple bamboo plots in Zhejiang province in China. After obtaining initial results from our numerical model, we then went back to Zhejiang province in China to interview farmers to better understand their beliefs, perceptions, and decision-making, and used that information to further refine our model and better reconcile our model with the actual data. Then, to further understand the beliefs and perceptions of bamboo farmers that underlie and rationalize their bamboo shoot and bamboo stem harvesting decisions as revealed in the data, and to help us assess and mitigate sources of differences between actual behavior and the optimal strategy given by our model, we use our nested stochastic dynamic bioeconomic model to develop a dynamic structural econometric model to estimate different subsets of the parameters econometrically.

Since there is a large set of parameters in our nested stochastic dynamic bioeconomic model, we are unable to identify the entire set of parameters simultaneously. Instead, we run several different specifications of our structural model, each focusing on estimating a different set of structural parameters, holding the remaining parameters fixed at the values we calibrated for

our numerical model based on research and information on Moso bamboo from the biological sciences and in economic data. For each specification, the respective structural parameters provide suggestive evidence for the beliefs and perceptions of bamboo farmers regarding that parameter. We use any differences between the estimated structural parameters and the respective values we calibrated based on biological sciences and economic data to help us assess and mitigate sources of differences between actual behavior and the optimal strategy given by our model.

After applying the iterative strategy above to refine our model to ensure that it best reflects reality, we find that the actual bamboo stem and bamboo shoot harvests come close to approximating the optimal harvesting strategy, though some differences remain. Our results have important implications for bamboo forest management and, to the extent that some of the differences between actual harvests and optimal bamboo harvests reflect possible sub-optimal behavior on the part of bamboo forest managers, for ways to improve bamboo forest management and policy. More generally, our novel nested stochastic dynamic bioeconomic model has important implications for the sustainable management of forests worldwide, particularly when the forests produce products that grow on trees, are renewable, and can be harvested at more frequent intervals than the trees themselves.

The balance of our paper proceeds as follows. We discuss the previous literature in Section 2. Section 3 provides background information on Moso bamboo. We describe our numerical dynamic model of bamboo forest management in Section 4. We describe our chosen parameter values in Section 5. Section 6 presents the results of our numerical dynamic model. In Section 7, we compare the dynamically optimal harvesting strategies derived from our model with data on actual bamboo shoot and bamboo stem harvests on multiple bamboo plots in multiple townships in Zhejiang province in China. Section 8 presents our dynamic structural econometric model and its results. We conclude in Section 9.

2. Previous Literature

We build on the seminal models of optimal forest management developed by Faustmann (1849) for multiple harvests and Wicksell ([1901] 1934) for a single harvest; elaborated upon by Samuelson (1976); and subsequently extended in many ways (Newman, 1988; Jackson, 1980; Chang, 1983; Chang, 1981; Hall, 1983; Berck, 1981; Bowes, 1983; Calish et al., 1978; Hartman, 1976; Nguyen, 1979; Strang, 1983; Chang, 1982; Klemperer, 1979; Pearse, 1967; Rideout, 1982;

Ollikainen, 1991; Bare and Waggener, 1980; Gregersen, 1975; McConnell et al., 1983; Hardie et al., 1984; Newman et al., 1985; Nautiyal and Williams, 1990; Chang, 1998; Deegen et al., 2011; Arimizu, 1958; Amidon and Akin, 1968; Kilkki and Väisänen, 1969; Hool, 1965; Hool, 1966; Amidon and Akin, 1968; Amidon and Akin, 1968; Brodie et al., 1978; Brodie and Kao, 1979; Chen et al, 1980; Ritters et al., 1982; Tyler, Macmillan, and Dutch, 1996; Ritters, 1982; Haight, 1985; Yousefpour and Hanewinkel, 2009; Buongiorno, and Gilles, 2003; Kant and Alavalapati, 2014), albeit with a predominant focus on developed countries. Wu et al. (2024) provide a recent review of the literature on optimal forest management. We innovate on this literature by developing a model of optimal forest management under uncertainty for interdependent forest products; and also by analyzing forest management in a developing country.

There are multiple available models to measure the growth and productivity of a Moso bamboo plant. Allometric equations and logistic functions have been used for characterizing bamboo growth. An allometric model predicts biomass using diameter at breast height. Biological studies suggest using the Chapman-Richards model (Richards, 1959), which is a flexible growth model for plants (Liu and Li, 2003), and has been used to predict Moso bamboo height (Yen, 2016). In addition to a model for bamboo stem growth, we also need a model for bamboo shoot growth. Bamboo shoot biomass accumulation has been described using logistic curve (Zhou, 1998). The literature constructing a growth model for bamboo shoots is sparse, however, and even less is known about undergrowth winter shoot growth. Thus, as the Chapman-Richards model is a generalized logistic curve, and since bamboo shoots are young bamboo plants, we adopt and separately parameterize separate Chapman-Richards models for winter shoot growth and spring shoot growth as well.

The dynamics and interdependence of bamboo stem and bamboo shoots share similar characteristics to the dynamics and interdependence of cows and calves, and the resulting cattle cycle (USDA, 2025); we therefore contribute to the literature on cattle management and cattle cycles (Rosen, Murphy and Scheinkman, 1994; Hadley, Wolf and Harsh, 2006; Tonsor, 2011). In Wu et al. (2025b), we develop an analogous notion of a bamboo cycle.

Our paper also contributes to the literature on dynamic structural econometric models, spawned by the seminal work of Rust (1987), and their applications, including related applications to natural resources (Timmins, 2002; Huang and Smith, 2014; Aguirregabiria and Luengo, 2016; Oliva et al., 2020; Sears, Lin Lawell and Walter, 2025; Araujo, Costa, and Sant’Anna, 2020; Sears

et al., 2025a; Sears et al., 2025b), the environment and energy (Gillingham et al., 2022; Langer and Lemoine, 2022; Donna, 2019; Blundell, Gowrisankaran and Langer, 2020; Cook and Lin Lawell, 2020; Feger, Pavanini and Radulescu, 2020; Weber, 2022; Toyama, 2024; Bradt, 2024; Li, Liu and Wei, 2022), agriculture (Scott, 2013; Carroll et al., 2019; Meneses et al., 2025a; Carroll et al., 2025b; Meneses et al., 2025b; Yeh, Gómez and Lin Lawell, 2025; Carroll et al., 2025a; Sambucci, Lin Lawell and Lybbert, 2025), health (Iskhakov, 2010; Agarwal et al., 2021), development (Duflo, Hanna and Ryan, 2012; Rojas Valdés, Lin Lawell and Taylor, 2025), and consumer behavior (Gowrisankaran and Rysman, 2012; Ching and Osborne, 2020). Misra and Nair (2011) provide evidence that dynamic structural econometric models can help significantly improve decision-making and outcomes.

We innovate on the literature on dynamic structural econometric models by nesting our nested stochastic dynamic bioeconomic model within the maximum likelihood estimation, thereby conducting a “nested nested fixed point maximum likelihood estimation”. We also innovate on the literature on dynamic structural econometric modeling, and structural econometric modeling more generally, by using research and knowledge from the biological and plant sciences to inform our modeling and to calibrate the biological parameters in our model. Owing to intertwined feedback links between biological and economic systems, bioeconomic modeling is challenging, and there is a considerable need for studies that couple economic models of decision-making with biophysical models to provide policy-relevant implications (Kling et al., 2017).

3. Moso Bamboo

3.1. The dynamics and interdependence of bamboo stem and bamboo shoots

Moso bamboo (*Phyllostachys pubescens*) is the single most important bamboo species in China, accounting for 74% of China’s bamboo forest area (“China Forestry and Grassland Administration”, 2018). Moso bamboo distributes mostly in subtropical provinces including Fujian, Hunan, Zhejiang, and Jiangxi. Moso bamboo reproduce by bamboo shoots grown from rhizomes. Rhizomes are mature underground stems while shoots are buds of new bamboo. Generally, Moso bamboo reach maturity after five years.

Bamboo shoots grow annually from a bamboo plant’s rhizomes, which is an underground system of bamboo stems. As long as the rhizome has not been destroyed, bamboo shoots can still

emerge from rhizomes. A bamboo plant may have rhizomes that extend massively and thus can have lots of nodes for shoots growth.

A bamboo growth year begins on September 1, the first day of winter shooting. The number of bamboo shoots at the beginning of the bamboo growth year is positively correlated with the number of bamboo stem: the more bamboo stem, the more rhizomes there are underground, and the more bamboo shoots that can grow (Li et al., 2016; Zhang and Ding, 1997). The number of bamboo shoots is also positively correlated with precipitation in July and August of the previous bamboo growth year, when bamboo shoots are being formed (Zhang and Ding, 1997).

As long as the shoots are underground and have not emerged above ground, they are called winter shoots. Winter shoots remain dormant during the coldest winter days in January and February, and emerge above ground as spring shoots in March when temperature rises. Due to their dormancy, the nutrient contents of winter shoots do not change by much in these two months (Su, 2012). Winter shoots can be harvested and sold on the market for a high winter shoots price until they emerge above ground and start to be called spring shoots. The traditional bamboo management guidance is to avoid harvesting too many winter shoots before spring shoots emerge, in order to foster a new bamboo forest (Forestry Department of Hunan Province, 2008).

Bamboo shoots either degenerate, are harvested, or are left in the ground and grow into a newly grown bamboo stem (personal communication, bamboo specialist at Zhejiang Provincial Key Laboratory of Bamboo of Zhejiang Provincial Academy of Forestry, August 2018). More than half of the shoots will degenerate and die naturally before they grow into bamboo plants (Jiang, 2007).

Bamboo shoots grow into a bamboo plant after the end of spring shooting (Shi et al., 2013). The number of newly grown bamboo is the number of surviving bamboo shoots minus number of shoots harvested. Generally, since Moso bamboo stems reach their maximum biomass at age 4-5 years (Zhang et al., 2014; Zhuang et al., 2015), do not increase significantly in biomass after 4.62 years (Zhuang et al., 2015), and mature at age 5-6 years (Yen and Lee, 2011). Bamboo farmers usually clear cut sixth-year-old bamboo rather than wait until they grow into seven-year-old ones (personal communication, bamboo specialist at Zhejiang Provincial Key Laboratory of Bamboo of Zhejiang Provincial Academy of Forestry, August 2018).

3.2. Bamboo market

The bamboo market in China is arguably characterized by perfect competition. The number of bamboo farmers in China is quite high. There were 7.14 million bamboo farmers in 2010 (International Bamboo and Rattan Organisation, 2012). In Anji County of Zhejiang province alone, there were approximately 110,000 farmers growing bamboo and another 11,000 people working in the bamboo-processing industry in the county in 1999 (Pérez et al., 1999). Bamboo farmers in Zhejiang province are small peasants who own a relatively small amount of land per family. The average land area managed by a family in Anji County is 21.2 mu, of which 14.9 mu (70%) is allocated to bamboo plantations (Pérez et al., 1999).

Bamboo management standards for ensuring an appropriate tree cover and to prevent degradation of the resource stock vary by province and sometimes also by county, and are suggested by the production cooperatives. The actual cultivation of bamboo forests is still done by individual bamboo farmers on their own land, however (personal communication, Mr. Jianping Pan, manager of Fumin Bamboo Shoot Specialized Cooperative, August 2018).

Since fresh bamboo shoots are hard to store and transport for long distances, the majority of the fresh bamboo shoots are sold to markets in Zhejiang province, Jiangsu Province, and Shanghai. In addition, approximately 15% of the winter shoots and one third of the spring shoots are sold to local shoots processing factories (Wu et al., 2016). Consumers of bamboo shoots are from highly populated areas such as Shanghai, as well as other cities in Zhejiang and Jiangsu province including but not limited to Yongkang, Cixi, Yuyao, Dongyang, Shangyu, Fuyang, Shaoxing, Ningbo, Changzhou, Suzhou, and Hangzhou. (Shen et al., 1998; Wu et al., 2016). Most of the bamboo stem are processed locally within each county to reduce transportation costs and to contribute to local economic growth (Kusters & Belcher, 2004). Consumers of bamboo stems are generally local bamboo stem processing and manufacturing factories, due to the high transportation costs and the initiatives to contribute to local economic growth (Zhang, 2003; Kusters and Belcher, 2004). Moso bamboo stem and shoots are not only produced in Zhejiang province but also in Hunan, Fujian, Jiangxi, and Sichuan provinces. Bamboo shoots, and especially winter shoots on Zhejiang market are from all these markets, and compete for the same consumers. (People.cn, 2014).

3.3. Bamboo shoots price

Bamboo shoots prices vary day to day and are hard to predict. Bamboo shoot prices also differ for spring bamboo shoots and winter bamboo shoots. Due to difficulties of locating and harvesting underground winter bamboo shoots, as well as popular preference over more tender taste, winter bamboo shoots have higher market price than spring bamboo shoots. Winter shoots can be harvested and sold on the market for a high winter shoots price until they emerge above ground and start to be called spring shoots.

In addition, spring shoots taste bitter, are no longer tender, and are no longer even considered a good source of vegetable (LeBeau Bamboo Nursery, 2015) and therefore will be unpopular on the market after they exceed 30 cm (or about 1 foot), which is after around 10 days of spring shooting (Tao et al. 2020). The maximum period for which spring shoots are traded and spring shoots prices are recorded on the wholesale market for Zhejiang province is from March 1 to June 13, which is longer than the local number of days spring shoots are on the market because it incorporates all townships in Zhejiang province, each of which has a spring shoots market period of around 60 days that occur at different times. In Shanchuan and Sian Townships, the maximum number of days for which spring shoots are traded and spring shoots prices are recorded on the wholesale market is from March 1st to April 30, which is 61 days. These are from data and interviews.

According to data from National Agricultural Products Business Information Public Service Platform operated by China's Ministry of Commerce, bamboo shoots prices are volatile in Zhejiang province. The bamboo shoot price in a representative market in Jiaxing in Zhejiang province varied from 3.06 ¥/kg to 24.75 ¥/kg in 2017. Bamboo shoot prices in Zhejiang province followed a similar pattern from 2014 to 2018, with the highest prices in the winter. Bamboo shoot prices are in the range of 2 ¥/kg to 40 ¥/kg, with highest price generally appearing in November, and the lowest price generally appearing in May. Bamboo shoot prices tend to vary a lot within and between years. According to data from the Nanjing Administration of Agriculture and Rural Area,⁴ bamboo shoot prices in China during the years 2017-2018 were in the range of 3 ¥/kg to 26 ¥/kg, with highest price appearing between December and February, and the lowest price appearing in May. According to data from the Jiaxing Vegetable Wholesale Transaction Market in Zhejiang province, one of the largest and closest wholesale markets for vegetables in Zhejiang province, the daily winter shoots price over the winter shooting season (September 1 to February

⁴ <http://nyncj.nanjing.gov.cn/fww/xq/jgzs/>

28) over the years 2016-2018 varied from 4.7 ¥/kg to 32 ¥/kg, with a mean of 16.60 ¥/kg and a standard deviation of 6.93 ¥/kg; and the daily spring shoots price over the spring shooting season (March 1 to August 31) over the years 2016-2018 varied from 0.60 ¥/kg to 20 ¥/kg, with a mean of 5.68 ¥/kg and a standard deviation of 4.08 ¥/kg. Data from 2016-2018 for Longyou Township in Zhejiang province show that bamboo shoots prices vary a lot (Yue et al., 2019).

3.4. Bamboo stem price

The bamboo stem price does not vary much over the course of a year. There is not much price volatility in bamboo stem price within a year (personal communication with Jianping Pan, director of Fumin Bamboo Shoot Specialized Cooperative, in August 2018), and there is not much price change between years during the year of our data set. This is confirmed by the production record data from Tianlin Bamboo and Shoots Production Cooperatives as price for one kilograms of stem only varies within 0.5 dollars within a year, and only for a few days. According to online data for bamboo stem price for Lechang Township in Guangdong Province, the bamboo stem price remained stable based on spot price on several days from different months during 2017-2018 (China Timber, 2022). Bamboo stem price remained stable from 2016-2018 in Longyou Township in Zhejiang province (Yue et al., 2019).

According to Wu and Cao (2016), the 2012 Moso bamboo stem price is ¥1.39/kg in Zhejiang province. Meng, Liu, and Wu (2014) find average bamboo stem price to be ¥0.79/kg.

3.5. Harvest costs

The bamboo shoot and bamboo stem harvest cost is determined by labor costs (Wu and Cao, 2016) as well as land specific characteristics such as the slope of forest land (Wu and Cao, 2016; Dong et al., 2015). Due to decreasing profits from bamboo forests, younger workers in rural areas have left their hometown and started to find jobs in large cities such as Hangzhou and Shanghai, leaving less labor to manage bamboo forests in rural areas of Zhejiang province; this insufficient labor supply has resulted in increasing labor costs in recent years (Jiang, 2020).

For additional background information regarding China's forests, bamboo forests, and Moso bamboo, see Wu et al. (2025a).

4. Dynamic Model of Moso Bamboo Management

We solve for the optimal bamboo stem harvest and bamboo shoot harvest policy using a numerical dynamic model that nests an inner finite-horizon within-year daily dynamic programming problem within an outer finite-horizon between-year annual dynamic programming problem. The inner finite-horizon within-year daily dynamic programming problem captures daily bamboo shoot growth within a year. The outer finite-horizon between-year annual dynamic programming problem captures annual bamboo stem growth from year to year.

Our dynamic programming model is a finite sequence of finite-horizon problems. In particular, we nest an inner dynamic optimization problem within an outer dynamic optimization problem. The inner dynamic optimization problem is a finite-horizon within-year daily dynamic programming problem representing the days in one bamboo growth year.

The outer finite-horizon between-year annual dynamic programming problem captures annual bamboo stem growth from year to year. Generally, Moso bamboo stems reach their maximum biomass at age 4-5 years (Zhang et al., 2014; Zhuang et al., 2015), do not increase significantly in biomass after 4.62 years (Zhuang et al., 2015), and mature at age 5-6 years (Yen and Lee, 2011). In our numerical dynamic model, we allow bamboo managers the possibility of letting bamboo stem grow to age 10 years, well past their age of maximum biomass, if it is optimal for them to do so. Since it would be very economically inefficient to harvest bamboo stem after 10 years, however, we model bamboo stem growth with a finite horizon of 10 years. We therefore have a finite sequence of 10 one-year finite horizon problems. Thus, the outer dynamic optimization problem is a finite-horizon between-year annual dynamic programming problem that runs from 0 to 10 years.

Because we have two time variables, year y and day-in-year d , in a finite horizon, nested backward iteration is applicable. We can think of the management of different age classes of bamboo that co-exist at the same time as a (possibly infinite) set of these finite-horizon dynamic programming problems (each representing a finite sequence of finite-horizon problems), one for each set of bamboo that emerged as shoots at the same time.

To incorporate uncertainty, we allow precipitation, prices, and the possibility of bamboo shoots death to all be stochastic. For both precipitation and prices, we use the empirical distribution of precipitation and prices in the data. For the possibility of bamboo shoots death, we calibrate

the probability of death using data and information from previous studies of bamboo growth in the scientific, biological, and plant science literature.

We model the harvesting of bamboo that emerged from rhizomes at the same time (and therefore of the same age class). The daily control (action) variables are the bamboo shoots harvest a_s (in units of number of bamboo shoots) and bamboo stem harvest a_b (in units of number of bamboo stem), where the subscript s denotes bamboo shoots and the subscript b denotes bamboo stem. The daily state variables include the number of bamboo stem n_b ; the number of bamboo shoots n_s ; our precipitation state *precip*, which is a dummy for the cumulative daily precipitation over July and August of that bamboo growth year exceeding a high precipitation threshold that day; and the shoots price. The time variables are year y and day-in-year d .

We therefore use a separate Chapman-Richards model (Richards, 1959) for the growth of each of the three types j of bamboo products: winter shoots s_w , spring shoots s_s , and bamboo stem b . The Chapman-Richards model is given by:

$$Y_j = A_j \cdot (1 - Q_j e^{-\alpha_j t_j})^{1/(1-v_j)},$$

where Y_j is the total biomass for bamboo product j in a single bamboo plant; t_j is the age of bamboo (in days for winter and spring shoots, and in years for bamboo stem); and A_j , α_j , Q_j , v_j are parameters whose interpretation and values for each of the bamboo product types j are discussed in more detail in Appendix A. Figures A.1 and A.2 in Appendix A plot our calibrated Chapman-Richards growth functions for bamboo shoots and bamboo stem, respectively. The biomass we predict using the Chapman-Richards model cannot be directly used to calculate total revenue in per period payoff because shoots and stem price are recorded in yuan per kilogram, where the weight in kilograms contains both biomass and water. We need coefficients that transfer biomass into kilograms for both bamboo forest products. The Chapman-Richard's model predicts biomass Y_b and Y_s in units of kilograms. The price we have are for weights rather than weights of biomass, which is dry weight. Since weight include water and biomass, we use a conversion coefficient τ to transfer biomass into its actual weight.

The per-period profit function is:

$$\pi(s, a, d, y) = \pi_b(s, a, d, y) + \pi_s(s, a, d, y),$$

where $\pi_b(s, a, d, y)$ is the profit from harvesting bamboo stem and $\pi_s(s, a, d, y)$ is profit from harvesting bamboo shoot.

The profit $\pi_b(s, a, d, y)$ from bamboo stem harvest is given by:

$$\pi_b(s, a, d, y) = (p_b - c_b)\tau a_b Y_b,$$

where p_b is the bamboo stem price, c_b is the unit cost of bamboo stem harvest, and τ is the conversion coefficient to convert bamboo stem price and bamboo stem quantity $a_b Y_b$ to comparable units.

The profit $\pi_s(s, a, d, y)$ from bamboo shoot harvest is given by:

$$\pi_s(s, a, d, y) = (p_s - c_s)\tau a_s Y_s,$$

where p_s is the bamboo shoots price, c_s is the unit cost of bamboo shoot harvest, and τ is a conversion coefficient to convert bamboo shoots price and bamboo shoots quantity $a_s Y_s$ to comparable units. We allow the bamboo shoots price p_s and the bamboo shoots harvest cost c_s to differ for winter shoots and spring shoots.

In our base case specification, we assume that the bamboo farmer is risk neutral, and therefore that the bamboo farmer's per-period payoff (or utility) $U(\cdot)$ is linear in per-period profit $\pi(s, a, d, y)$:

$$U(\pi(s, a, d, y)) = \pi(s, a, d, y).$$

Since the bamboo farmer faces multiple sources of uncertainty (precipitation, weather, and shoots death), in an alternative specification we allow the bamboo farmer to be risk averse, and use a constant relative risk aversion (CRRA) functional form for the farmer's per-period payoff (or utility) $U(\cdot)$ as a function of per-period profit $\pi(s, a, d, y)$:

$$U(\pi(s, a, d, y)) = \frac{\pi(s, a, d, y)^{1-\eta}}{1-\eta}$$

where η is the coefficient of constant relative risk aversion. When $\eta = 0$, the bamboo farmer is risk neutral, and the per-period payoff corresponds to the linear per-period payoff function from our base case specification.

The per-period payoff function $U(\cdot)$ is a function of state variables, action values, day in year, and year. Given the large number of bamboo farmers – there were 110,000 bamboo farmers in one county (Anji county) in Zhejiang province alone in 1999 (Pérez et al., 1999) – and the other features of the bamboo market described in Section 3, we assume that the bamboo market is perfectly competitive and that bamboo farmers are therefore price takers.

The bamboo forest manager chooses the bamboo stem harvest strategy and the bamboo shoot harvest strategy to maximize the present discounted value (PDV) of the entire stream of per-

period payoffs. The value function, which is the present discounted value of the entire stream of per-period payoffs when the bamboo shoot harvest and bamboo stem harvest decisions are chosen optimally, is given by the following Bellman equation:

$$V(s, d, y) = \max_{a=(a_b, a_s)} U(\pi(s, a, d, y)) + \beta E[V(s', d', y') | s, a, d, y].$$

Since we nest an inner finite-horizon within-year daily dynamic programming problem within an outer finite-horizon between-year annual dynamic programming problem, we use two different discount factors: a daily discount factor β_d and an annual discount factor β_y . We set the annual discount factor to be $\beta_y = 0.9$. We set the daily discount factor to be $\beta_d = \beta_y^{1/365}$, which yields an annual discount factor of 0.9 over 365 days.

For the transition density for number of bamboo shoots within a year: during each year y , the number of bamboo shoots will change via the bamboo shoots harvest decision a_s . For the transition density for number of bamboo plants, the number of bamboo stems n_b changes via the bamboo stem harvest decision a_b . Bamboo stem harvest can occur any day of year.

In addition, since bamboo shoots grow into bamboo plants after the end of spring shooting, the number of bamboo stems n_b also increases by the number of bamboo shoots that remain at the end of the last day of spring shooting. We model the harvesting of bamboo that was all planted at the same time (and therefore of the same age class). We model bamboo that start as bamboo shoots and, if they are not harvested, grow into bamboo stem at the end of spring shooting at the end of the first bamboo growth year. Thus, for the bamboo stem, we focus only on bamboo stem that result from bamboo shoots that remain at the end of spring shooting in the first bamboo growth year.

The transition density for number of bamboo shoots between years is more complicated. The number of bamboo shoots at the beginning of the year depends on the number of remaining bamboo plants at the beginning of the year (remaining after bamboo stem are harvested the previous year), since remaining bamboo plants affect density of the bamboo stand and therefore the amount of rhizomes underground from which new bamboo shoots can grow (Li et al., 2016; Zhang and Ding, 1997).

To capture the positive correlation of the number of bamboo shoots with precipitation during the months of July and August of the previous bamboo growth year (Zhang and Ding, 1997), we allow rain to be stochastic. We include a state variable, *precip*, which is a dummy for the

cumulative daily precipitation over July and August of that bamboo growth year exceeding a high precipitation threshold that day. We specify a daily probability of high precipitation, which is the probability that *precip* is equal to 1 (high) that day. The daily probability of high precipitation is weakly monotonically increasing from July 1 to August 31.

The number of bamboo shoots n_s is bounded below by 0 and bounded above by an upper bound \bar{n}_s that reflects in part the carrying capacity for bamboo plants. We implement the positive correlation between number of bamboo shoots at the beginning of the year and on the number of remaining bamboo plants at the beginning of the year (remaining after bamboo stem are harvested the previous year) by setting the number of bamboo shoots at the beginning of the year equal to the number of remaining bamboo plants at the beginning of the year, subject to the capacity constraints. We implement the positive correlation of the number of bamboo shoots with precipitation during the months of July and August of the previous bamboo growth year as a bin increment of 1 if *precip* is equal to 1 (high).

Since winter shoots price and spring shoots price tend to vary a lot within and across seasons, we also allow the shoots price to be stochastic. In particular, we draw daily winter shoots price from the empirical distribution of daily winter shoots price, and we draw the daily spring price from the empirical distribution of daily spring shoots price.

Since more than half of the shoots will degenerate and die naturally before they grow into bamboo plants (Jiang, 2007), we allow for the possibility of shoots death. In particular, each day during winter shooting, there is a daily probability of shoots decline, which is a daily probability that the number of shoots will decline by 1 bin.

Since this is a finite horizon problem, the value functions and policy functions are functions of both measures of time, year y and day-in-year d . The terminal condition for the outer annual backwards iteration is that there is no continuation value after the last day of the last year. The terminal condition for the inner day-in-year backwards iteration is that, except in the last year, when there is no continuation value after the last day of the last year, the continuation in the last day of the year is the expected value of the value function on the first day of the next year. We can think of the management of different age classes of bamboo that co-exist at the same time as a (possibly infinite) set of these finite-horizon dynamic programming problems (each representing a finite sequence of finite-horizon problems), one for each set of bamboo planted at the same time. We model the harvesting of bamboo that was all planted at the same time (and therefore of the

same age class). From Xu et al. (2017), there are on average 400 stems of bamboo in the same one-year age class.

5. Data and Parameter Values

5.1. Data on actual bamboo shoot and bamboo stem harvest

We collect data on actual bamboo shoot harvest and bamboo stem harvest decisions on 20m by 20m plots in Shanchuan Township and Sian Township in Zhejiang province in China. Our data set includes 35 plots over 2 bamboo growth years from March 1, 2017 to August 31, 2018: 20 plots in Sian Township and 15 plots in Shanchuan Township. We describe and discuss our harvest data in more detail in Appendix B, and present plots of these data in Section 7.

5.2. Bamboo shoot price

We collect data on daily bamboo shoots prices for Zhejiang province over the period January 1, 2014 to June 30, 2018 from the National Agricultural Products Business Information Public Service Platform operated by China's Ministry of Commerce (National Agricultural Products Business Information Public Service Platform, 2018). We use the shoots prices from the Zhebei Jiashan wholesale market since there are more days available, they are more consistent with price from sample plots, and also more detailed. Generally, there no bamboo shoots are sold in July, August, and September since these months are formation period of shoots underground. From mid June to mid October, there are no shoots on the wholesale market, and thus no price available.

We merge our daily shoots price data with our harvest data as follows. If any bamboo shoots harvest took place during a particular day on a particular sample plot, then we use the bamboo shoot price that the farmer received and recorded in the raw data we collected from the field trip to Zhejiang. This means the shoots price are not necessarily the same for the 2 townships due to different shoots harvest activities. This also means that even for the same township, there could be different price for the same day if harvest took place on one sample plot but not another. For sample plot-days for which no bamboo shoots harvest took place, use the daily bamboo shoots prices for Zhejiang province from the National Agricultural Products Business Information Public Service Platform (2018).

Since spring shoots are only marketable for 10 days, after which they become bitter and not marketable (LeBeau Bamboo Nursery, 2015; Tao et al. 2020), we set the bamboo shoot price for spring shoots to be 0 ¥/kg after 10 days of spring shooting in the numerical model.

Figures 1a and 1b plot histograms of the daily winter shoots price during winter shooting and the daily spring shoots price during spring shooting, respectively, over the years 2016-2018 for all plots in our data set.

5.3. Bamboo stem price

Unlike for bamboo shoots, daily data on bamboo stem price is not available from government operated databases. There is not much price volatility in bamboo stem price within a year, and there also was not much of a change in bamboo stem price between years during the year of our data set (personal communication, Mr. Jianping Pan, manager of Fumin Bamboo Shoot Specialized Cooperative, August 2018). The bamboo stem prices faced by the bamboo managers in our data set were 0.4 ¥/kg in 2017 and 0.38 ¥/kg in 2018 (personal communication, Mr. Jianping Pan, manager of Fumin Bamboo Shoot Specialized Cooperative, August 2018).

5.4. Harvest costs

According to Mr. Jianping Pan, who is the manager of Fumin Bamboo Shoot Specialized Cooperative, bamboo harvest can be fast, one worker can harvest 1 mu (about 667 square meters) of bamboo per day. For bamboo stem, workers get paid daily with a rate of 300 yuan per day and harvest 1,250 to 2,000 kg of bamboo stem. For spring shoots, workers got paid daily, with a rate of 150 to 180 yuan per day, and can harvest 100 kg of spring shoots per day; the total harvest for each sample plot is 200-250 kg per spring shooting period. Winter shoots are more expensive and harder to find than spring shoots, and thus workers get paid for 300 yuan per day and can harvest about 15 to 20 kg per day (personal communication, Mr. Jianping Pan, manager of Fumin Bamboo Shoot Specialized Cooperative, August 2018).

For the harvesting costs in our numerical model, we calculate the unit costs of harvest by dividing estimates of harvest per worker per day by cost per worker per day. We vary the unit cost c_s of bamboo shoot harvest from 300/20 ¥/kg to 300/15 ¥/kg for winter shoots, and from 150/100 ¥/kg to 180/100 ¥/kg for spring shoots. We set the unit cost c_b of bamboo stem harvest from 300/2,000 ¥/kg to 300/1,250 ¥/kg.

5.5. Time

Since winter shooting period and the corresponding spring shooting years span two consecutive calendar years, we measure a “year” based on bamboo growth rather than following a strict calendar year. The first day of each bamboo growth year is the first day of winter shooting. The first day of winter shooting is September 1. As long as the shoots are underground and have not emerged above ground, they are called winter shoots. Winter shoots remain dormant during the coldest winter days in January and February, and emerge above ground in March when the temperature rises (Su, 2012). Spring shooting begins on March 1 in Zhejiang province. Thus, winter shooting is from September 1 until February 28. The number of winter shooting days is therefore 181 days. The spring shooting period starts on March 1 and ends on August 31, the last day of the bamboo growth year. In other words, shoots do not become bamboo stem until the end of the bamboo growth year. This is because, as seen in Song et al. (2016), the bamboo still seems to grow very fast following the spring shoot growth function until the end of the bamboo growth year. Thus, the number of spring shooting days we use in our numerical model is 184 days.

Since bamboo stem harvest is possible during any day throughout the year, we model the decision on each day of the year. The day in year d starts on September 1 (the first day of winter shooting) in one calendar year and ends on August 31 the following calendar year, 365 days later. Our year variable y is the bamboo growth year, not calendar year. Each bamboo growth year y starts from September 1 of one calendar year and end on August 31 of the following calendar year.

5.6. Daily probability of high precipitation

In our stochastic rain specification, we add a third state variable, *precip*, which is a dummy for the cumulative daily precipitation over July and August of that bamboo growth year exceeding a high precipitation threshold that day. We use 400 mm as the cutoff to determine if *precip* is high (*precip* = 1) or not (*precip* = 0).

Since cumulative daily precipitation over July and August of a bamboo growth year varies within July and August of a year (and is weakly monotonically increasing), the state variable *precip* is not necessarily constant for all of July and August. For some townships and some years, it is possible that *precip* = 0 at the beginning of July but then becomes 1 closer to the end of August.

The daily probability of high precipitation is the probability that *precip* is equal to 1 (high) that day. The daily probability of high precipitation is weakly monotonically increasing from July 1 to August 31. For each township, for each day in July and August, we calculate the daily empirical probability of high precipitation ($precip = 1$) using the latest daily precipitation data for the township from the National Oceanic and Atmospheric Administration Climate Prediction Center over the period 2010-2018. In particular, for each township, for each of the 62 days from July 1 and August 31, the daily empirical probability of high precipitation for that day for that township is calculated as the fraction of years in that township over the period 2010-2018 for which $precip = 1$ on that day.

5.7. Daily probability of shoots decline

More than half of the shoots will degenerate and die naturally before they grow into bamboo plants (Jiang, 2007). In our base case, we set the daily probability of shoots decline during winter shooting to be $1/30$, such that the number of shoots is expected to decline by approximately 1 bin per month during winter shooting.

6. Results of Numerical Model

We run several specifications of our numerical model that vary the costs and prices for winter shoots, spring shoots, and bamboo stem. Winter shoots have higher prices and higher costs than spring shoots. Due to difficulties of locating and harvesting underground winter bamboo shoots, as well as popular preference over more tender taste, winter bamboo shoots have a higher market price than spring bamboo shoots. Winter shoots are more expensive and harder to find than spring shoots. Both winter shoots and spring shoots are more expensive than bamboo stem.

For each of our specifications for the costs and prices for winter shoots, spring shoots, and bamboo stem, we solve for the value function, the bamboo shoot harvest policy function, and the bamboo stem harvest policy function, each as a function of the number of bamboo shoots and the number of bamboo stem. Since our dynamic model nests an inner finite-horizon within-year daily dynamic programming problem within an outer finite-horizon between-year annual dynamic programming problem, there is a separate value function and policy function for each day of each year.

Our numerical model yields several notable results. For the optimal bamboo stem harvest, we find that it is generally optimal to wait to harvest any bamboo stem until the fourth bamboo growth year or later, after their growth has begun to slow down, and harvest bamboo stem at the beginning of the year (Figures 4 and 5). The intuition is as follows. Since bamboo stems continue to grow each year until age 4-5 years, and bamboo stem growth begins to slow down around the end of the 4th year and beginning of the 5th year, and since the number of bamboo shoots at the beginning of each year depends on the number of bamboo stem remaining at the beginning of each year, it is optimal to wait until the fourth year or later to harvest any bamboo stem in order to allow bamboo stem biomass to accumulate and make bamboo shoots harvest possible for multiple years.

We also find that it is optimal to harvest bamboo stem at beginning of the bamboo growth year it is being harvested. The intuition is as follows. The number of bamboo shoots at the beginning of each year depends on the number of bamboo stem remaining at the beginning of each year. After bamboo stem growth has slowed down, any increase in bamboo stem biomass from delaying bamboo stem harvest past the beginning of the year will be small.

For the optimal bamboo shoot harvest (Figure 6), we find that it is generally optimal to harvest bamboo shoots each year that there are bamboo shoots, starting from the second bamboo growth year. In terms of within-year timing for any winter shoots harvest, we find that even if there is a possibility of shoots death, it is generally optimal to wait at least until end of October and when winter shoots price is high to do any winter shoots harvest. If the number of shoots is very low, however, the winter shoots price is high, and there is a possibility of shoots death, it may be optimal to harvest some winter shoots harvest earlier, including in the first bamboo growth year (Figure 7). Likewise, if the bamboo farmer is risk averse and there is a possibility of shoots death, it may be optimal to harvest some winter shoots harvest earlier even when the winter shoots price is low (Figure 8). In terms of within-year timing for any spring shoots harvest, we find that, unless the spring shoots price is high, should wait until last days of spring shooting for which spring shoots are marketable to do any spring shoots harvest.

The intuition for why it is generally optimal to wait until the second year to begin harvesting bamboo shoots is as follows. The number of bamboo shoots at the beginning of each year depends on the number of bamboo stem remaining at the beginning of each year. In the first year, when all the bamboo is in the form of bamboo shoots, it is optimal not to do any harvesting so that the bamboo shoots can grow into bamboo stem at the end of the first year, which would

then result in there being both bamboo shoots and bamboo stem at the beginning of the second year. It is then optimal to harvest the bamboo shoots each year for which there are bamboo shoots, starting from the second bamboo growth year.

It is optimal to harvest bamboo shoots each year (starting from the second year) since the number of bamboo shoots at the beginning of each year is not affected by the bamboo shoot harvest in the previous year, but depends instead on number of bamboo stem remaining at the beginning of each year (starting from second year).

The intuition for why, even if there is a possibility of shoots death, it is generally optimal to wait at least until end of October and when winter shoots price is high to do any winter shoots harvest is that over 50% of winter shoots growth takes place during November. Winter shoots growth stops at beginning of December.

The intuition why it may be optimal to harvest some winter shoots harvest earlier, including in the first bamboo growth year if the number of shoots is very low and the winter shoots price is high is as follows. With very few winter shoots and the possibility of shoots death, it may be worthwhile to harvest earlier if the winter shoots price is high even though the shoots have less biomass because the farmer faces a non-trivial possibility that all of the very few shoots may die before they are harvested.

The intuition why it may be optimal to harvest some winter shoots harvest earlier if the bamboo farmer is risk averse is as follows. With the possibility of shoots death, it may be worthwhile to harvest earlier even though the shoots have less biomass for a risk averse farmer since the expected marginal utility from waiting for the shoots to accumulate more biomass may be lower than the opportunity cost from any foregone sure profits from harvesting winter shoots earlier before they die.

The intuition for why it is optimal to wait until the last days of spring shooting for which spring shoots are marketable to do any spring shoots harvest unless the spring shoots price is high is that the more the spring shoots grow, the more biomass there is.

Figure 9 presents a sample set of optimal trajectories for bamboo stem harvest, shoots harvest, number of bamboo stem, and number of shoots.

Our solution for optimal bamboo forest management might also characterize the optimal forest management policy for other forests that produce products (such as fruits, nuts, sap, and

maple syrup) that grow on trees that are renewable and can be harvested at more frequent intervals than the trees themselves.

7. Comparing Optimal Bamboo Management with Actual Harvest Decisions

We compare the optimal bamboo stem harvest and bamboo shoot thinning policy as given by our numerical dynamic model with our data on actual bamboo shoot and bamboo stem harvests from multiple bamboo plots in Zhejiang province in China.

Figure 10 presents time series plots of the optimal vs. actual number of bamboo stem harvested by initial age class on each sample plot. Actual bamboo stem harvests tend to be close to what our model stipulates to be optimal: bamboo stem harvests do not take place until the fourth bamboo growth year or later. Nevertheless, given relatively low bamboo stem prices, farmers might do even better by waiting even more years before harvesting bamboo stem.

Figure 11 presents time series plots of the optimal vs. actual number of bamboo shoots harvested, as imputed above, on each sample plot. Actual shoots harvests also tend to be close to what our model deems to be optimal: bamboo shoots harvest take place when shoots prices are high; and if the number of shoots is very low and there is a possibility of winter shoots death, winter shoots are harvested earlier when the shoots price is high, including in the first bamboo growth year. Nevertheless, the frequency and/or quantity of actual winter shoots harvests might be higher than optimal.

Previous anecdotal evidence suggests that winter shoots have sometimes been over-harvested for high profit, leaving too few shoots for future bamboo forest development. We find that, for the plots in our data set, even when there are few shoots, and even with the possibility of winter shoots death and high winter shoots prices, the frequency and/or quantity of winter shoots harvest might be higher than optimal.

Thus, results of our comparison between the optimal bamboo stem harvest and bamboo shoot harvest given by our dynamic model with the data on actual bamboo stem harvests and bamboo shoots harvest is that actual bamboo stem and bamboo shoot harvests come close to approximating the optimal harvesting strategy, but have some features that differ from what our model suggests to be optimal.

We also compare actual and optimal welfare, where welfare is defined as the present discounted value (PDV) of the entire stream of daily profits. First, we calculate and compare actual and optimal PDV profits during the days with data, where optimal PDV profits during the days with data is calculated using the actual initial states and actual daily prices and precipitation; and the actual PDV profits during the days with data is calculated using the actual daily actions, states, prices, and precipitation. Second, we calculate and compare optimal expected PDV profits over the entire 11-year horizon, where optimal expected PDV profits over the entire 11-year horizon is given by the value function evaluated at the initial states, and takes an expectation over stochastic shoots prices and precipitation; and where actual expected PDV profits over the entire 11-year horizon is the actual PDV profits during the days with data calculated above plus the discounted continuation value evaluated at the actual state at end of data and assumes optimal behavior after the last day of data.

As seen in the welfare results in Table 1, the optimal strategy yields a higher PDV profits than actual harvests do, both during the days with data, and also in expectation over the entire 11-year horizon. The optimal strategy does even better than actual harvests in expectation over the 11-year horizon, since the optimal strategy may involve forgoing some profits in the short run in order to benefit from higher and more sustained profits in the long run, and thus we see even more benefits of the optimal strategy in expectation over 11 years than we see in just the 2 years of our data.

8. Dynamic Structural Econometric Model

To understand the beliefs and perceptions of bamboo farmers that underlie and rationalize their bamboo shoot and bamboo stem harvesting decisions as revealed in the data, and to help us assess and mitigate sources of differences between actual behavior and the optimal strategy given by our model, we use our nested stochastic dynamic bioeconomic model to develop a dynamic structural econometric model. We innovate upon the nested fixed point maximum likelihood estimation developed by Rust (1987, 1988) by nesting our nested stochastic dynamic bioeconomic model within the maximum likelihood estimation, so that the nested fixed point calculation itself also involves a nest (“nested nested fixed point maximum likelihood estimation”).

Since there is a large set of parameters in our nested stochastic dynamic bioeconomic model, we are unable to identify the entire set of parameters simultaneously. Instead, we run

several different specifications of our structural model, each focusing on estimating a different set of structural parameters θ , holding the remaining parameters fixed at the values we calibrated for our numerical model based on research and information on Moso bamboo from the biological sciences and in economic data. For each specification, the respective structural parameters θ provide suggestive evidence for the beliefs and perceptions of bamboo farmers regarding that parameter θ . We use any differences between the estimated structural parameters θ and the respective values we calibrated based on biological sciences and economic data to help us assess and mitigate sources of differences between actual behavior and the optimal strategy given by our model.

8.1. Nested nested fixed point maximum likelihood estimation

To account for unobservable state variables that bamboo farmers observe (but we do not observe) when they make their spraying and harvesting decisions, we next expand the per-period payoff to each choice a to include both a deterministic component $U_0(\pi(s, a, d, y); \theta)$ and a stochastic component $\varepsilon(a)$. The deterministic component $U_0(\pi(s, a, d, y); \theta)$ of the per-period payoff in our structural model is equal to the bamboo farmer's per-period payoff $U(\pi(s, a, d, y))$ from the numerical model; as before, we assume the bamboo farmer is risk neutral in the base case and allow for risk aversion in an alternative specification. The stochastic component to the per-period payoff to each action is an unobserved shock $\varepsilon(a)$ associated with that action choice a that is assumed to be distributed i.i.d. extreme value across days d , years t , farmers i , and actions a . The value function incorporating these unobserved shocks $\varepsilon(a)$ is now given by:

$$V(s, d, y; \theta) = \max_{a=(a_b, a_s)} U_0(\pi(s, a, d, y); \theta) + \varepsilon(a) + \beta E[V(s', d', y'; \theta) | s, a, d, y].$$

The conditional choice probabilities $\Pr(a|s, d, y; \theta)$ are given by:

$$\Pr(a|s, d, y; \theta) = \frac{\exp(U_0(\pi(s, a, d, y); \theta) + \beta V^c(s, a, d, y; \theta))}{\sum_{\tilde{a}} \exp(U_0(\pi(s, \tilde{a}, d, y); \theta) + \beta V^c(s, \tilde{a}, d, y; \theta))},$$

where $V^c(s, a, d, y; \theta)$ is the continuation value, which is the expected value of the value function next period given the states and actions this period:

$$V^c(s, a, d, y; \theta) = E[V(s', d', y'; \theta) | s, a, d, y].$$

We use a nested fixed point maximum likelihood estimation to find the parameters θ that maximize the log-likelihood function $L(\theta)$, which is the following function of the conditional choice probabilities $\Pr(a|s, d, y; \theta)$:

$$L(\theta) = \sum_i \sum_d \sum_y \Pr(a_{idy} | s_{idy}, d, y; \theta).$$

Building on the nested fixed point maximum likelihood estimation technique developed by Rust (1987, 1988), our maximum likelihood estimation methodology nests an inner finite-horizon within-year daily dynamic programming problem within an outer finite-horizon between-year annual dynamic programming problem to solve for the continuation values and conditional choice probabilities for each day d in each year y at each evaluation of the likelihood function. Thus, the nested fixed point calculation itself involves a nest -- our nested stochastic dynamic bioeconomic model, an expanded technique we thereby refer to as “nested nested fixed point maximum likelihood estimation”.

In one specification, the structural parameter θ we estimate is the annual discount factor β_y . In a second specification, the structural parameter θ we estimate is the growth rate α_{sw} for winter shoots. In a third specification, the structural parameters θ we estimate are parameters in the shoots harvesting cost, namely the winter shoots harvest cost parameter c_{sw} , the spring shoots harvest cost parameter c_{ss} , and the shoots harvest cost convex cost parameter c_{s_2} . In a fourth specification, the structural parameter θ we estimate is the daily shoots decline probability during winter shooting. In a fifth specification, we allow for risk aversion and the structural parameter θ we estimate is the coefficient of constant relative risk aversion η .

Identification of the parameters θ comes from the differences between per-period payoffs across different action choices, which in finite-horizon dynamic discrete choice models are identified when the discount factor β , the distribution of the choice-specific shocks $\varepsilon(a)$, and the final period continuation value are fixed (Rust, 1994; Magnac and Thesmar, 2002; Abbring, 2010). In particular, because the discount factor β and the distribution of the choice-specific shocks $\varepsilon(a)$ are fixed and the final period continuation value is zero, the parameters in our model are identified because each term in the deterministic component $\pi_0(s, a, d, y; \theta)$ of the per-period payoff depends on the action a being taken in day d in year y , and therefore varies based on the action taken; as a consequence, the parameters do not cancel out in the differences between per-period payoffs across different action choices and are therefore identified. For example, net price ($p_b - c_b$) for bamboo stem is identified in the difference between the per-period payoff from choosing to harvest bamboo stem and the per-period payoff from any action choice a that does not involve harvesting bamboo stem.

In general, the discount factor β is not identified in dynamic structural econometric models. In order to identify the discount factor β in a dynamic structural econometric model, one needs a variable that affects the transition density of state variables that affect per-period profits, but does not itself directly affect the per-period profits except through its effect on the transition density (Fang and Wang, 2015). In our case, our variable for precipitation over the months of July and August does not directly affect daily profits except through its effect on the number of bamboo shoots at the beginning of the subsequent bamboo growth year. Thus, in our case, we can potentially identify the discount factor β . Results show the discount factor β is very close to 1, so the bamboo farmers in our data set do care about the future.

Standard errors are formed by a non-parametric bootstrap. Sample plots are randomly drawn from the data set with replacement to generate 100 independent panels each with the same number of sample plots as in the original data set. The structural model is run on each of the new panels. The standard errors are then formed by taking the standard deviation of the parameter estimates from each of the panels.

8.2. Results

Table 2 presents the results of the specification of the dynamic structural model in which the structural parameter θ we estimate is the annual discount factor β_y . Results show the discount factor β_y is close to 1, so the bamboo farmers in our data set do care about the future, which rules out myopic behavior as a possible source of discrepancy between actual and optimal decisions.

Table 3 presents the results of the specification of the dynamic structural model in which the structural parameter θ we estimate is the growth rate α_{s_w} for winter shoots. Our structural parameter estimate for the winter shoots growth rate α_{s_w} of 0.272 for the pooled sample is larger than the winter shoots growth rate α_{s_w} we calibrated based on biological research and information on winter shoots to be 0.016. Thus, the harvesting behavior of the bamboo farmers in our data can be rationalized by high perceived growth rate for winter shoots. In other words, bamboo farmers are acting as if they perceive or believe the growth rate for winter shoots to be higher than may actually be the case based on data and information on winter shoots from plant scientists. Figure 12 plots the bamboo farmers' perceived Chapman-Richards growth function for winter shooting and spring shooting based on our structural parameter estimates for the winter shoots growth rate.

Thus, the high quantity and frequency of winter shoots harvests we see in the data can be rationalized by perceived growth rate for winter shoots that is higher than may actually be the case based on data and information on winter shoots from plant scientists.

Table 4 presents the results of the specification of the dynamic structural model in which the structural parameters θ we estimate are parameters in the shoots harvesting cost, namely the winter shoots harvest cost parameter c_{sw} , the spring shoots harvest cost parameter c_{ss} , and the shoots harvest cost convex cost parameter c_{s2} . We find that the bamboo farmers in our data are acting as if they perceive or believe spring shoots harvest costs to be lower higher than the actual monetary cost, and that they perceive or believe high convex costs to shoots harvest. The high perceived convex costs to shoots harvest may explain why we see a high frequency of winter shoots harvests in the data.

Table 5 presents the results of the specification of the dynamic structural model in which the structural parameter θ we estimate is the daily shoots decline probability during winter shooting. We find that the harvesting behavior of the bamboo farmers in our data can be rationalized by a daily winter shoots decline probability of zero. We rerun our numerical nested stochastic dynamic bioeconomic model using a daily winter shoots decline probability of zero. Figure 13 compares the resulting optimal bamboo shoots harvests with the actual data (optimal bamboo stem harvests remain unchanged from before, and the respective figure is identical to Figure 10), and Table 6 compares resulting optimal welfare with actual welfare. Results suggest that using the perceived daily winter shoots decline probability estimated from the structural model does not substantially improve the fit of the model; while the optimal strategy may better match spring shoots harvest during the second year of our data set (see, for example, initial age class 0 in the second year of data following the second dashed red vertical line) when using the structural parameter estimate (Figure 13), the calibrated parameter better explains the actual winter shoots harvest (Figure 11). Moreover, the difference between optimal and actual welfare is higher under the structural parameter estimate (Table 6) than under the calibrated parameter (Table 1).

Table 7 presents the results of the specification of the dynamic structural model in which we allow for risk aversion and the structural parameter θ we estimate is the coefficient of constant relative risk aversion η . We find that the harvesting behavior of the bamboo farmers in our data for the pooled sample (“All”) and for Sian Township can be rationalized by a coefficient of constant relative risk aversion of $\eta = 0.8$. In contrast, bamboo farmers in Shanchuan Township

appear to be risk neutral, as the coefficient of constant relative risk aversion η for the subsample of farmers in Shanchuan Township is statistically insignificant. We rerun our numerical nested stochastic dynamic bioeconomic model using a coefficient of constant relative risk aversion of $\eta = 0.8$. Figure 13 compares the resulting optimal bamboo shoots harvests with the actual data (optimal bamboo stem harvests remain unchanged from before, and the respective figure is identical to Figure 10), and Table 8 compares resulting optimal welfare with actual welfare.

8.3. Discussion and policy implications

Results of our dynamic structural econometric model suggest three possible sources of differences between actual and optimal harvests: a higher perceived winter shoots growth rate, more convex costs to shoots harvest, and risk aversion. Each of these three channels would explain why actual winter shoots harvests in the data are higher and more frequent than our model suggests is optimal.

Since the winter shoots growth rate we calibrate is based on research and information on Moso bamboo from biological science, the parameter value we use likely reflects actual winter shoots growth. Thus, if bamboo farmers perceive the winter shoots growth rate to be higher than what it actually is, this is a misperception that leads to welfare loss (as seen in Table 1) and can be addressed via programs and policies that better inform farmers about winter shoot growth.

As for the high convex costs to harvesting shoots, since we have less information on costs and since costs can vary by farmer, we therefore feel less confident that the convexity parameter we use for our model reflects the true convexity of costs for all bamboo farmers; it is therefore very possible that the structural estimate for the convexity of shoots harvesting costs may better reflect the convexity of all shoots harvesting costs, monetary and otherwise, that farmers face. Nevertheless, as the high convexity of costs leads to a welfare loss, there may be scope for improving bamboo farmer profits and sustainability through initiatives that address the reasons costs are so convex. For example, if the convex costs arise due to labor shortages or labor constraints that preclude a farmer from harvesting a large quantity of shoots at one time, then policies that alleviate the labor market frictions might be beneficial.

As for risk aversion, results of our structural model suggest that bamboo farmers in Sian Township are risk averse while the bamboo farmers in Shanchuan Township are not. As risk aversion leads to lower profits, there may be scope for improving bamboo farmer profits and

sustainability through initiatives, such as crop insurance, that may make bamboo farmers less risk averse.

9. Conclusion

When there is both uncertainty and interdependent forest products, the interaction between these two phenomena leads to a complicated set of trade-offs; developing a model at this nexus is the primary innovation of our paper. In particular, we develop a nested stochastic dynamic bioeconomic model of optimal forest management under uncertainty for interdependent products that differ in their growth cycles, rates of growth, lengths of growing periods, and potential harvest frequency. Our model enables us to assess the optimality of actual decisions made by forest managers and to develop a dynamic structural econometric model to understand the beliefs and perceptions that underlie and rationalize their management strategies.

We apply our model to bamboo forests, which generate two interdependent products: bamboo shoots and bamboo stems. To solve for the optimal bamboo stem harvest and bamboo shoot harvest policy, our nested stochastic dynamic bioeconomic model nests an inner finite-horizon within-year daily dynamic programming problem within an outer finite-horizon between-year annual dynamic programming problem. The inner finite-horizon within-year daily dynamic programming problem captures daily bamboo shoot growth within a year. The outer finite-horizon between-year annual dynamic programming problem captures annual bamboo stem growth from year to year. To incorporate uncertainty, we allow precipitation, prices, and the possibility of bamboo shoots death to all be stochastic.

The results of our numerical dynamic model suggest that since the number of bamboo shoots at the beginning of each year depend on the number of bamboo stem remaining at the beginning of each year and on whether the previous year was a high-precipitation year, and since bamboo stem continue to grow each year until age 4-5 years, while bamboo shoots only grow within a year, it is generally optimal to harvest bamboo shoots each year that there are bamboo shoots starting the second year; and to wait to harvest all the bamboo stem until the fourth year or later, after their growth has begun to slow down.

For bamboo shoots harvests, we find that it is generally optimal to harvest bamboo shoots each year that there are bamboo shoots, starting from the second bamboo growth year. In terms of within-year timing for any winter shoots harvest, we find that even if there is a possibility of

shoots death, it is generally optimal to wait at least until end of October and when winter shoots price is high to do any winter shoots harvest. If the number of shoots is very low, however, the winter shoots price is high, and there is a possibility of shoots death, it may be optimal to harvest some winter shoots harvest earlier, including in the first bamboo growth year. In terms of within-year timing for any spring shoots harvest, we find that, unless the spring shoots price is high, should wait until last days of spring shooting for which spring shoots are marketable to do any spring shoots harvest.

We compare the optimal bamboo stem harvest and bamboo shoot harvest policy with actual data on bamboo shoot and bamboo stem harvests on multiple bamboo plots in multiple townships in Zhejiang province in China. We find that the actual bamboo stem and bamboo shoot harvests come close to approximating the optimal harvesting strategy, though some differences remain. First, given relatively low bamboo stem prices, farmers might do even better by waiting even more years before harvesting bamboo stem. Second, for the plots in our data set, even when there are few shoots, and even with the possibility of winter shoots death and high winter shoots prices, the frequency and/or quantity of winter shoots harvest might be higher than optimal. The results are consistent with anecdotal evidence that winter shoots have sometimes been over-harvested for high profit, leaving too few shoots for future bamboo forest development.

To further understand the beliefs and perceptions of bamboo farmers that underlie and rationalize their bamboo shoot and bamboo stem harvesting decisions as revealed in the data, and to help us assess and mitigate sources of differences between actual behavior and the optimal strategy given by our model, we use our nested stochastic dynamic bioeconomic model to develop a dynamic structural econometric model to estimate different subsets of the parameters econometrically.

Results of our dynamic structural econometric model suggest that one possible reason why actual winter shoots harvests in the data are higher than our model suggests is optimal is that bamboo farmers perceive that the winter shoots growth rate is higher than it may actually be according to research and information on Moso bamboo from biological science. To the extent that the overharvesting of winter shoots and its resulting welfare loss is due to farmers misperceiving the winter shoots growth rate, this inefficiency can be addressed via programs and policies that better inform farmers about winter shoot growth.

Results of our dynamic structural econometric model suggest that one possible reason why actual winter shoots harvests in the data are more frequent than our model suggests is that the costs of harvesting shoots is more convex than we assume to be the case. Since we have less information on costs and since costs can vary by farmer, it is therefore very possible that the structural estimate for the convexity of shoots harvesting costs may reflect the actual convexity of all shoots harvesting costs, monetary and otherwise, that farmers face. As the high convexity of costs leads to a welfare loss, however, there may be scope for improving the bamboo farmer profits and sustainability through initiatives that address the reason costs are so convex. For example, if the convex costs arise due to labor shortages or labor constraints that preclude a farmer from harvesting a large quantity of shoots at one time, then policies that alleviate the labor market frictions might be beneficial.

Results of our dynamic structural model suggest that bamboo farmers in Sian Township are risk averse while the bamboo farmers in Shanchuan Township are not. As risk aversion leads to lower profits, there may be scope for improving bamboo farmer profits and sustainability through initiatives, such as crop insurance, that may make bamboo farmers less risk averse.

There are several important features of bamboo forest management that are at least partially captured by our model. These include winter shoots growth, variation in bamboo shoot price and bamboo stem price over time; capacity and/or labor constraints on the amount that is feasible to harvest in one day; the possibility of shoots death, and risk aversion.

The remaining differences between actual harvests and optimal bamboo harvests may reflect features that we do not capture in our model, including liquidity constraints during the season that may lead bamboo managers to harvest some bamboo shoots or bamboo stem earlier or later; variation in age of bamboo stem in a bamboo forest; carbon sequestration motives; alternative crops or uses of the land; environmental benefits of a bamboo forest; and/or actual parameter values that differ from the ones we use in the model. If some of the differences between actual harvests and optimal harvests arise because of economic constraints such as liquidity constraints and/or labor constraints, it is possible that some of these constraints can be ameliorated by well-designed institutions or policies.

Our results have important implications for bamboo forest management and, to the extent that some of the differences between actual harvests and optimal bamboo harvests reflect possible sub-optimal behavior on the part of Moso bamboo forest managers, for ways to improve Moso

bamboo forest management and policy. More generally, our novel nested stochastic dynamic bioeconomic model has important implications for the sustainable management of forests under uncertainty, particularly when the forests produce products (such as fruits, nuts, and maple syrup) that grow on trees, that are renewable, and can be harvested at more frequent intervals than the trees themselves.

References

- Abbring, J. (2010). Identification of dynamic discrete choice models. Annual Review of Economics, 2, 367-394.
- Agarwal, N., I. Ashlagi, M. Rees, P. Somaini, and D. Waldinger. (2021). Equilibrium allocations under alternative waitlist designs: Evidence from deceased donor kidneys. Econometrica, 89, 37-76.
- Aguirregabiria, V., and A. Luengo. (2016). A microeconomic dynamic structural model of copper mining decisions. Working paper, University of Toronto.
- Amidon, E.L., and G.S. Akin. (1968). Dynamic programming to determine optimum levels of growing stock. Forest Science, 14(3), 287-291.
- Araujo, R., F.J.M. Costa, and M. Sant'Anna. (2020). Efficient forestation in the Brazilian Amazon: Evidence from a dynamic model. Working paper, FGV EPGE and University of Delaware.
- Arimizu, T. (1958). Regulation of the cut by dynamic programming. Journal of the Operations Research Society of Japan, 1(4), 175-182.
- Bare, B.B., and T.R. Waggener. (1980). Forest land values and return on investment. Forest Science, 26(1), 91-96.
- Bellman, R. (1954). The theory of dynamic programming. Bulletin of the American Mathematical Society, 60(6), 503-515.
- Berck, P. (1981). Optimal management of renewable resources with growing demand and stock externalities. Journal of Environmental Economics and Management, 8(2), 105-117.
- Blundell, W., G. Gowrisankaran, and A. Langer. (2020). Escalation of scrutiny: The gains from dynamic enforcement of environmental regulations. American Economic Review, 110, 2558-2585.
- Bowes, M.D. (1983). Economic foundations of public forestland management. Resources for the Future.
- Bradt, J.T. (2024). A policy by any other name: Unconventional industrial policy in the US residential solar industry. Working paper, University of Texas at Austin.
- Brodie, J.D., and C. Kao. (1979). Optimizing thinning in Douglas-fir with three-descriptor dynamic programming to account for accelerated diameter growth. Forest Science, 25(4), 665-672.
- Brodie, J.D., D.M. Adams, and C. Kao. (1978). Analysis of economic impacts on thinning and rotation for Douglas-fir, using dynamic programming. Forest Science, 24(4), 513-522.
- Buongiorno, J., and J.K. Gilles. (2003). Decision Methods for Forest Resource Management. Academic Press, San Diego.
- Bystriakova, N., V. Kapos, I. Lysenko, and C.M.A Stapleton. (2003). Distribution and conservation status of forest bamboo biodiversity in the Asia-Pacific Region. Biodiversity & Conservation, 12(9), 1833-1841.
- Carroll, C.L., C.A. Carter, R.E. Goodhue, and C.-Y.C. Lin Lawell. (2019). Crop disease and agricultural productivity: Evidence from a dynamic structural model of Verticillium wilt management. In W. Schlenker (Ed), Agricultural Productivity and Producer Behavior (pp. 217-249). Chicago: University of Chicago Press.
- Carroll, C.L., C.A. Carter, R.E. Goodhue, and C.-Y.C. Lin Lawell. (2025a). Supply chain externalities and agricultural disease. Working paper, Cornell University.
- Carroll, C.L., C.A. Carter, R.E. Goodhue, and C.-Y.C. Lin Lawell. (2025b). The economics of decision-making for crop disease control. Working paper, Cornell University.

- Calish, S., R.D. Fight, and D.E. Teeguarden. (1978). How do nontimber values affect Douglas-fir rotations?. Journal of Forestry, 76(4), 217-221.
- Chang, S. (1982). An economic analysis of forest taxation's impact on optimal rotation age. Land Economics, 58(3), 310-323.
- Chang, S.J. (1981). Determination of the optimal growing stock and cutting cycle for an uneven-aged stand. Forest Science, 27(4), 739-744.
- Chang, S.J. (1983). Rotation age, management intensity, and the economic factors of timber production: Do changes in stumpage price, interest rate, regeneration cost, and forest taxation matter? Forest Science, 29(2), 267-277.
- Chen, C.M., D.W. Rose, and R.A. Leary. (1980). Derivation of optimal stand density over time—a discrete stage, continuous state dynamic programming solution. Forest Science, 26(2), 217-227.
- China Forestry and Grassland Administration. (2018). Forest Resources in China.
- China Timber. (2022). Bamboo Stem Price Trend. China Timber. Retrieved 2 November 2022. URL: <http://www.chinatimber.org/price/price.asp?wood=8&pageno=4>
- Ching, A.T., and M. Osborne. (2020). Identification and estimation of forward-looking behavior: The case of consumer stockpiling. Marketing Science, 39, 669-848.
- Cook, J.A., and C.-Y.C. Lin Lawell. (2020). Wind turbine shutdowns and upgrades in Denmark: Timing decisions and the impact of government policy. Energy Journal, 41, 81-118.
- Deegen, P., M. Hostettler, and G.A. Navarro. (2011). The Faustmann model as a model for a forestry of prices. European Journal of Forest Research, 130(3), 353-368.
- Démurger, S., Y. Hou, and W. Yang. (2009). Forest management policies and resource balance in China: An assessment of the current situation. Journal of Environment and Development, 18(1), 17-41.
- Dixit, A.K., and R.S. Pindyck. (1994). Investment under uncertainty. Princeton University Press.
- Dong, D., Y. Tong, X. Yi., C. Zhang, and M. Gu. (2015). Harvesting cost and economics efficiency analysis of bamboo forests in various slope hill lands. Journal of Bamboo Research, 34(4), 23-27. [in Chinese]
- Donna, J.D. (2019). Measuring long-run price elasticities in urban travel demand. Working paper, Ohio State University
- Du, H., G. Zhou, W. Fan, H. Ge, X. Xu, Y. Shi, and W. Fan. (2010). Spatial heterogeneity and carbon contribution of aboveground biomass of Moso bamboo by using geostatistical theory. Plant Ecology, 207(1), 131-139.
- Fang, H., and Y. Wang. (2015). Estimating dynamic discrete choice models with hyperbolic discounting, with an application to mammography decisions. International Economic Review, 56 (2), 565-596.
- Fang, J.Q., and Z. Xie. (1994). Deforestation in preindustrial China: The Loess Plateau region as an example. Chemosphere, 29(5), 983-999.
- Faustmann, M. (1849). Calculation of the value which forest land and immature stands possess for forestry. General Journal of Forestry and Hunting. [in German]
- Feger, F., N. Pavanini, and D. Radulescu. (2020). Welfare and redistribution in residential electricity markets with solar power. Working paper.

- Fekedulegn, D., M.P. Mac Siurtain, and J.J. Colbert. (1999). Parameter estimation of nonlinear growth models in forestry. Silva Fennica, 33 (4), 653.
- Feng, J., Q. Gong, and H. Wu. (2012). Research on the standing bamboo density in *Phyllostachys pubescens* forest.” Hunan Forestry Science and Technology, 39(4), 37-40. [in Chinese]
- Food and Agriculture Organization [FAO]. (2005). Global Forest Resources Assessment 2005.
- Food and Agriculture Organization [FAO]. (2015). Global Forest Resources Assessment 2015.
- Forestry Department of Hunan Province. (2008). Moso Bamboo Cultivation Techniques. 25 April 2008.
- Fu, J. (2001). Chinese Moso bamboo: its importance. Bamboo, 22(5), 5-7.
- Fu, S., X. Xu, and W. Wu. (2015). Analysis on the determinants of *Phyllostachys edulis*'s input-output efficiency. Journal of Zhejiang A&F University, 32(4), 596-602. [in Chinese]
- Gillingham, K., F. Iskhakov, A. Munk-Nielsen, J. Rust, and B. Schjerning. (2022). Equilibrium trade in automobiles. Journal of Political Economy, 130 (10), 2534-2593.
- Gowrisankaran, G., and M. Rysman. (2012). Dynamics of consumer demand for new durable goods. Journal of Political Economy, 120, 1173-1219.
- Gregersen, H.M. (1975). Effect of inflation on evaluation of forestry investments. Journal of Forestry, 73(9), 570-572.
- Hadley, C.L., C.A. Wolf, and S.B. Harsh. (2006). Dairy cattle culling patterns, explanations, and implications. Journal of Dairy Science, 89(6), 2286-2296.
- Haight, R.G. (1985). A comparison of dynamic and static economic models of uneven-aged stand management. Forest Science 31(4), 957-974.
- Hall, D.O. (1983). Financial maturity for even-aged and all-aged stands. Forest Science, 29(4), 833-836.
- Hardie, I.W., J.N. Daberkow, and K.E. McConnell. (1984). A timber harvesting model with variable rotation lengths. Forest Science, 30(2), 511-523.
- Hartman, R. (1976). The harvesting decision when a standing forest has value. Economic Inquiry, 14(1), 52-58.
- Hu, Y., Y. Zhang, J. Zhou, G. Wang, and Q. Guo. (2020). Transcriptome reveals the specificity of *Phyllostachys edulis* “Pachyloen” shoots at different developmental stages. Forests, 11(8), 861.
- Huang, L., and M.D. Smith. (2014). The dynamic efficiency costs of common-pool resource exploitation. American Economic Review, 104 (12), 4071-4103.
- International Bamboo and Rattan Organisation [INBAR]. (2012). China Bamboo Industry Plans at National and Provincial Levels. INBAR. Accessed 15 February 2022. URL: https://www.inbar.int/resources/inbar_publications/china-bamboo-industry-plans-at-national-and-provincial-levels/
- Iskhakov, F. (2010). Structural dynamic model of retirement with latent health indicator. Econometrics Journal, 13, S126-S161.
- Jackson, D. H. (1980). The Microeconomics of the Timber Industry. Westview Press.
- Jiang, Y. (2020). How to achieve one-on-one efficient reduction of poverty. JYB.cn, 25 May 2020. Retrieved February 18, 2022. URL: http://www.jyb.cn/rmtzgjyb/202005/t20200525_330371.html [in Chinese]
- Jiang, Z. (2007). Bamboo and Rattan in the World. Beijing: China Forestry Pub. House.

- Kant, S., and J.R.R. Alavalapati. (2014). Handbook of Forest Resource Economics. Abingdon: Routledge.
- Katsigris, E., G.Q. Bull, A. White, C. Barr, K. Barney, Y. Bun,, . . . , and H. Weyerhaeuser. (2004). The China forest products trade: Overview of Asia-Pacific supplying countries, impacts and implications. International Forestry Review, 6(3/4), 237-253.
- Kilkki, P., and U. Väisänen. (1969). Determination of the optimum cutting policy for the forest stand by means of dynamic programming. Acta Forestalia Fennica, 102.
- Klemperer, W.D. (1979). Inflation and present value of timber income after taxes. Journal of Forestry, 77(2), 94-96.
- Kling, C.L., R.W. Arritt, G. Calhoun, and D.A. Keiser. (2017). Integrated assessment models of the food, energy, and water nexus: a review and an outline of research needs. Annual Review of Resource Economics, 9(1), 143-163.
- Kusters, K., and B. Belcher. (2004). Forest Products, Livelihoods and Conservation: Case studies of non-timber forest product systems. Volume 1 - Asia. Center for International Forestry Research (CIFOR).
- Langer, A. and D. Lemoine. (2022). Designing dynamic subsidies to spur adoption of new technologies. Journal of the Association of Environmental and Resource Economists, 9(6), 1197-1234.
- LeBeau Bamboo Nursery. (2015). Bamboo as a Vegetable—Harvesting Edible Bamboo Shoots. 15 June 2014. Retrieved April 10, 2021. URL: <https://lebeaubamboo.com/article-bamboo-vegetable-harvesting-bamboo-shoots.php>
- Li, C., G.M. Zhou, Y.J. Shi, Y.F. Zhou, X.J. Xu, Y.P. Zhang, Y.Q. Fan, and Z.M. Shen,. (2016). Effects of old bamboo forests and relevant management measures on growth of new bamboo forests. Acta Ecologica Sinica, 36(8), 2243-2254. [in Chinese]
- Li, S., Y. Liu, and C.D. Wei. (2022). The cost of greening stimulus: A dynamic analysis of vehicle scrappage programs. International Economic Review, 63(4), 1561-1594.
- Liu, Z.-G., and F.-R. Li. (2003). The generalized Chapman-Richards function and applications to tree and stand growth. Journal of Forestry Research, 14(1), 19-26.
- Magnac, T., and D. Thesmar. (2002). Identifying dynamic discrete decision processes. Econometrica, 70, 801-816.
- Matthews, R. (2012). The economic and employment benefits of forests. Eco-Business, 7 March 2012.
- McConnell, K.E., J.N. Daberkow, and I.W. Hardie. (1983). Planning timber production with evolving prices and costs. Land Economics, 59(3), 292-299.
- Meneses, M.A., M.I. Gómez, D.R. Just, R. Kanbur, D. R. Lee, and C.-Y.C. Lin Lawell. (2025a). How to address barriers to the adoption of agricultural carbon sequestration. In Ariel Dinar and Robert Mendelsohn (Eds.), Handbook on Climate Change Impacts, Mitigation, and Adaptation in Agriculture, forthcoming.
- Meneses, M.A., M.I. Gómez, D.R. Just, R. Kanbur, D. R. Lee, and C.-Y.C. Lin Lawell. (2025b). Organic farming, soil health, and farmer perceptions: A dynamic structural econometric model. Working paper, Cornell University.
- Meng, H., Q. Liu, and W. Wu. (2014). Study on the cost-benefit and carbon sequestration capacities of *Phyllostachys edulis* plantations under different types of management. Journal of Zhejiang A&F University, 31(6): 959-964. [in Chinese]
- Nath, A.J., G. Das, and A.K. Das. (2009). Above ground standing biomass and carbon storage in village bamboos in North East India. Biomass and Bioenergy, 33(9), 1188-1196.

- National Agricultural Products Business Information Public Service Platform. (2018). People's Republic of China Ministry of Commerce.. Retrieved from <http://nc.mofcom.gov.cn/> [in Chinese].
- Nautiyal, J.C., and J.S. Williams. (1990). Response of optimal stand rotation and management intensity to one-time changes in stumpage price, management cost, and discount rate. Forest Science, 36(2), 212-223.
- Newman, D.H., C.B. Gilbert, and W.F. Hyde. (1985). The optimal forest rotation with evolving prices. Land Economics, 61(4), 347-353.
- Newman, D.H. (1988). The optimal forest rotation: A discussion and annotated bibliography. Gen. Tech. Rep. SE-48. Asheville, NC: US Department of Agriculture, Forest Service, Southeastern Forest Experiment Station.
- Nguyen, D. (1979). Environmental services and the optimum rotation problem in forest management Journal of Environmental Management, 8(2), 127-136
- Oliva, P., B.K. Jack, S. Bell, E. Mettetal, and C. Severen. (2020). Technology adoption under uncertainty: Take-up and subsequent investment in Zambia. Review of Economics and Statistics, 102, 617-632.
- Ollikainen, M. (1991). The effect of nontimber taxes on the harvest timing—the case of private nonindustrial forest owners: A note. Forest Science, 37(1), 356-363.
- Pearse, P.H. (1967). The optimum forest rotation. The Forestry Chronicle, 43(2), 178-195.
- People.cn. (2014). One hundred tons of daily winter shoot consumption in Hangzhou: Why winter shoots are more tender and valuable? (2014). People.cn, 26 November 2014. Retrieved February 16, 2022. URL <http://travel.people.com.cn/n/2014/1126/c41570-26095502.html> [in Chinese]
- Pérez, M.R., M. Zhong, B. Belcher, C. Xie, M. Fu, J. Xie. (1999). The role of bamboo plantations in rural development: The case of Anji County, Zhejiang, China. World Development, 27(1), 101-114.
- Rapson, D. (2014). Durable goods and long-run electricity demand: Evidence from air conditioner purchase behavior. Journal of Environmental Economics and Management, 68, 141-160.
- Ren, G., S.S. Young, L. Wang, W. Wang, Y. Long, R. Wu, ... , and D.W. Yu. (2015). Effectiveness of China's national forest protection program and nature reserves. Conservation Biology, 29(5), 1368-1377.
- Richards, F. (1959). A flexible growth function for empirical use. Journal of Experimental Botany, 10(2), 290-301.
- Rideout, D.B. (1982). Micro-Economic Properties of Four Local Forest Tax Methods. (doctoral dissertation). University of Washington, Seattle, United States.
- Riitters, K.H.; J.D. Brodie, and D.W. Hann. (1982). Dynamic programming for optimization of timber production and grazing in ponderosa pine. Forest Science, 28(3), 517-526.
- Rojas Valdés, R.I., C.-Y.C. Lin Lawell, and J.E. Taylor. (2025). Migration dynamics, strategy, and policy. Working paper, Cornell University.
- Rosen, S., K.M. Murphy, and J.A. Scheinkman. (1994). Journal of Political Economy, 102(3), 468-492
- Rust, J. (1987). Optimal replacement of GMC bus engines: An empirical model of Harold Zurcher. Econometrica, 55(5), 999-1033.
- Rust, J. (1988). Maximum likelihood estimation of discrete control processes. SIAM Journal on Control and Optimization, 26(5), 1006-1024.

- Rust, J. (1994). Structural estimation of Markov decision processes. In Robert F. Engle and Daniel L. McFadden (Eds.), Handbook of Econometrics, Volume IV (pp. 3081-3143). Elsevier.
- Sambucci, O., C.-Y.C. Lin Lawell, and T.J. Lybbert. (2025). Pesticide spraying and disease forecasts: A dynamic structural econometric model of grape growers in California. Working paper, Cornell University.
- Samuelson, P.A. (1976). Economics of forestry in an evolving society. Economic Inquiry, 14(4), 466-492.
- Scott, P. (2013). Dynamic discrete choice estimation of agricultural land use. Working paper, New York University.
- Scurlock, J.M.O., D.C. Dayton, and B. Hames. (2000). Bamboo: an overlooked biomass resource? Biomass and Bioenergy, 19(4), 229-244.
- Sears, L., C.-Y.C. Lin Lawell, G. Torres, and M.T. Walter. (2024a). Adjudicated groundwater property rights: A structural model of the dynamic game among groundwater users in California. Working paper, Cornell University.
- Sears, L., C.-Y.C. Lin Lawell, G. Torres, and M.T. Walter. (2024b). Moment-based Markov equilibrium estimation of high-dimension dynamic games: An application to groundwater management in California. Working paper, Cornell University.
- Sears, L., C.-Y.C. Lin Lawell, and M.T. Walter. (2024). Groundwater under open access: A structural model of the dynamic common pool extraction game. Working paper, Cornell University.
- SFA. (2014b). Report of forest resources in China (2009–2013). China Forestry Press, Beijing, p 86.
- Shen, Y., Y. Cheng, X. Xu, X. Cai, B. Zhang. (1998). Analysis prediction of market supply and demand for bamboo shoot products. Journal of Zhejiang A&F University, 15(4), 333-339. [in Chinese]
- Shi, Y., E. Liu, G. Zhou, Z. Shen, and S. Yu. (2013). Bamboo shoot growth model based on the stochastic process and its application. Scientia Silvae Sinicae, 49(9), 89-93. [in Chinese]
- Song, X., H. Gu, M. Wang, G. Zhou, and Q. Li. (2016). Management practices regulate the response of Moso bamboo foliar stoichiometry to nitrogen deposition. Scientific Reports, 6, 24107.
- Song, X., C. Peng, G. Zhou, H. Gu, Q. Li, and C. Zhang. (2016). Dynamic allocation and transfer of non-structural carbohydrates, a possible mechanism for the explosive growth of Moso bamboo (*Phyllostachys heterocycla*). Scientific Reports, 6, 25908.
- Song, X., G. Zhou, H. Jiang, S. Yu, J. Fu, W. Li, and C. Peng. (2011). Carbon sequestration by Chinese bamboo forests and their ecological benefits: assessment of potential, problems, and future challenges. Environmental Reviews, 19, 418-428.
- Strang, W.J. (1983). On the optimal forest harvesting decision. Economic Inquiry, 21(4), 576-583.
- Su, W. (2012). Fertilization theory and practice for *Phyllostachys edulis* stand based on growth and nutrient accumulation rules. (doctoral dissertation). Chinese Academy of Forestry, Beijing, China.
- Sun, H., Y. Lou, L. Li, H. Zhao, and Z. Gao. (2017). Research advances in the growth and development of bamboo culm. World Forestry Research, 30(4), 18-23.
- Tao, G.-Y., M. Ramakrishnan, K.K. Vinod, K. Yrjala, V. Satheesh, J. Cho, Y. Fu, and M. Zhou. (2020). Multi-omics analysis of cellular pathways involved in different rapid growth stages of moso bamboo. Tree Physiology, 40 (11), 1487-1508.

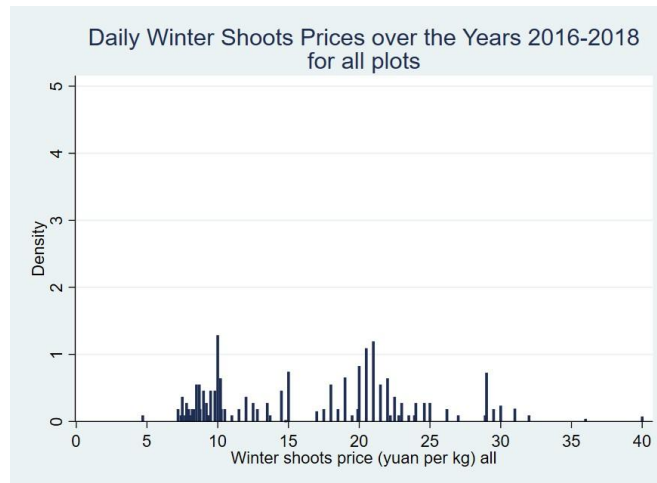
- Timmins, C. (2002). Measuring the dynamic efficiency costs of regulators' preferences: Municipal water utilities in the arid west. Econometrica, 70, 603-629.
- Tonsor, G.T. (2011). Evaluating cattle cycles: Changes over time and implications. Kansas State University Department of Agricultural Economics Publication AM-GTT-2011.4. URL: <https://www.agmanager.info/evaluating-cattle-cycles-changes-over-time-and-implications>
- Toyama, Y. (2024). Dynamic incentives and permit market equilibrium in cap-and-trade regulation. American Economic Journal: Microeconomics, 16 (3), 374-423.
- Tyler, A.L., D.C. MacMillan, and J. Dutch. (1996). Models to predict the General Yield Class of Douglas fir, Japanese larch and Scots pine on better quality land in Scotland. Forestry: An International Journal of Forest Research, 69(1), 13-24.
- U.S. Department of Agriculture [USDA]. (2025). Cattle & Beef - Sector at a Glance. Economic Research Service. Accessed 1 July 2025. URL: <https://www.ers.usda.gov/topics/animal-products/cattle-beef/sector-at-a-glance>
- Wang, G., J.L. Innes, S. Dai, and G. He. (2008). Achieving sustainable rural development in Southern China: the contribution of bamboo forestry. The International Journal of Sustainable Development & World Ecology, 15(5), 484-495.
- Wang, G., J.L. Innes, J. Lei, S. Dai, and S.W. Wu. (2007). China's forestry reforms. Science, 318(5856), 1556-1557.
- Wang, S., G.C. Van Kooten, and B. Wilson, B. (2004). Mosaic of reform: Forest policy in post-1978 China. Forest Policy and Economics, 6(1), 71-83.
- Wang, Y., X. Sun, Y. Ding, Zhangjun Fei, C. Jiao, M. Fan, B. Yao, P. Xin, J. Chu, and Q. Wei. (2019). Cellular and molecular characterization of a thick wall variant reveal a pivotal role of shoot apical meristem in bamboo culm transversal evolution. Journal of Experimental Botany, 70, 3911-3926.
- Weber, P. (2022). Dynamic responses to carbon pricing in the electricity sector. Working paper, University of California at Berkeley.
- Wei, Q., C. Jiao, Y. Ding, S. Gao, L. Guo, M. Chen, P. Hu, S. Xia, G. Ren, and Z. Fei. (2018). Cellular and molecular characterizations of a slow-growth variant provide insights into the fast growth of bamboo. Tree Physiology, 38, 641-654.
- Wei, Q., C. Jiao, L. Guo, Y. Ding, J. Cao, J. Feng, X. Dong, L. Mao, H. Sun, F. Yu, G. Yang, P. Shi, G. Ren, and Z. Fei. (2017). Exploring key cellular processes and candidate genes regulating the primary thickening growth of Moso underground shoots. New Phytologist, 214, 81-96.
- Wicksell, K. ([1901] 1934). Lectures on Political Economy. Trans. E. Classen. New York: Macmillan Company.
- Wu, T., D.R. Just, C.-Y.C. Lin Lawell, J. Zhao, Z. Fei, A. Ortiz-Bobea, and Q. Wei. (2024). Optimal forest management under uncertainty: A framework for stochastic dynamic bioeconomic modeling. International Business Analytics Conference Proceedings, 1 (1), 56-61.
- Wu, T., D.R. Just, C.-Y.C. Lin Lawell, A. Ortiz-Bobea, J. Zhao, Z. Fei, and Q. Wei. (2025a). Bamboo management, economics, and finance: Evidence from Moso bamboo farmers in China. Working paper, Cornell University
- Wu, T., D.R. Just, C.-Y.C. Lin Lawell, A. Ortiz-Bobea, J. Zhao, Z. Fei, and Q. Wei. (2025b). The bamboo cycle. Working paper, Cornell University.

- Wu, W., and X. Cao. (2016) Study on the relationship between input, output and economic benefit of Moso bamboo plantation. Journal of Nanjing Forestry University (Natural Sciences Edition), 40(3), 108-114. [in Chinese]
- Wu, B., H. Hu, X. Lin, S. Huang, J. Lai, and W. Li. (2016). A study of bamboo shoot market in Longyou County, Zhejiang. World Bamboo and Rattan, 14(6). [in Chinese]
- Xi, W., F. Wang, P. Shi, E. Dai, A.O. Anoruo, H. Bi, ..., and W. Li. (2014). Challenges to sustainable development in China: A review of six large-scale forest restoration and land conservation programs. Journal of Sustainable Forestry, 33(5), 435-453.
- Xiao, X., Y. Luo, and C. Ni. (1997). Study on the bamboo shoot yield of *Phyllostachys pubescens*. Journal of Fujian Forestry and Technology, 24(3), 24-27. [in Chinese]
- Xinhua Finance. (2020). Guard the mountain, follows the fortune: Green Insurance in Anji Zhejiang. Xinhua Finance, 28 April 2020. Retrieved February 17, 2022. URL: <http://greenfinance.xinhua08.com/a/20200428/1933450.shtml> [in Chinese]
- Xu, L., Y. Shi, G. Zhou, X. Xu, E. Liu, Y. Zhou, ... , and X. Deng. (2017). Temporal change in aboveground culms carbon stocks in the Moso bamboo forests and its driving factors in Zhejiang Province, China. Forests, 8(10), 371.
- Xu, Y., M. Wong, J. Yang, Z. Ye, P. Jiang, and S. Zheng. (2011). Dynamics of carbon accumulation during the fast growth period of bamboo plant. Botanical Review, 77(3), 287-295.
- Yeh, D.A., M.I. Gómez, and C.Y.C. Lin Lawell. (2025). Sustainable pest management, beliefs, and behavior: A dynamic bioeconomic analysis. Working paper, Cornell University.
- Yen, T.-M. (2015). Comparing aboveground structure and aboveground carbon storage of an age series of Moso bamboo forests subjected to different management strategies. Journal of Forest Research, 20(1), 1-8.
- Yen, T.-M. (2016). Culm height development, biomass accumulation and carbon storage in an initial growth stage for a fast-growing Moso bamboo (*Phyllostachys pubescens*). Botanical Studies, 57(1), 10.
- Yen, T.-M., and J.-S. Lee. (2011). Comparing aboveground carbon sequestration between moso bamboo (*Phyllostachys heterocycla*) and China fir (*Cunninghamia lanceolata*) forests based on the allometric model. Forest Ecology and Management, 261(6), 995-1002.
- Yousefpour, R., and M. Hanewinkel. (2009). Modelling of forest conversion planning with an adaptive simulation-optimization approach and simultaneous consideration of the values of timber, carbon and biodiversity. Ecological Economics, 68(6), 1711-1722.
- Yu, L. (2011). Study on density effect of *Phyllostachys edulis* stands in Southern Anhui Province. (doctoral dissertation). Chinese Academy of Forestry, Beijing, China.
- Yue, J., B. Wu, X. Lin, H. Hu, and J. Lai. (2019) Research on price variation of *Phyllostachys edulis* culm and shoot in Longyou County, Zhejiang Province. World Bamboo and Rattan, 17(1), 22-27. [in Chinese]
- Zeng, X., and L. Peng. (2013). Abnormal climate adversely affecting Zhejiang Winter Shoots Production and Doubled Previous Year-to-year Price. People.cn, 26 December 2013. [in Chinese]. URL: <http://shipin.people.com.cn/n/2013/1226/c85914-23952769.html>.
- Zhang, C., and X. Ding. (1997). Studies on yield of *Phyllostachys Heterocycla* var. *Pubescens* stands. Journal of Bamboo Research, 16(3), 31-36. [in Chinese]

- Zhang, H., S. Zhuang, B. Sun, H. Ji, C. Li, and S. Zhou. (2014). Estimation of biomass and carbon storage of moso bamboo (*Phyllostachys pubescens* Mazel ex Houz.) in southern China using a diameter–age bivariate distribution model. *Forestry*, 87(5), 674–682.
- Zhang, Q.-S. (2003). Attaching importance to science and innovation in the processing and utilization of bamboo timber in China. *Journal of Zhejiang A&F University*, 20(1), 1-4.
- Zhejiang Local Winter Shoots Trading on Site: Demonstrating Winter Shoots Price in Late November for Reference. (2020). [bilibili.com/](https://www.bilibili.com/video/BV1Ui4y1V7dy). [Video]. URL: <https://www.bilibili.com/video/BV1Ui4y1V7dy>. [in Chinese]
- Zheng, Y., W. Hong, and W. Zhang. (1998). Study on prediction of bamboo shoot weight and yield. *Scientia Silvae Sinicae*, 34(1), 69-72. [in Chinese]
- Zhou, B.-Z., M.-Y. Fu, J.-Z. Xie, X.-S. Yang, and Z.-C. Li. (2005). Ecological functions of bamboo forest: Research and application. *Journal of Forestry Research*, 16(2), 143-147.
- Zhou, F. (1998). Mathematical model for bamboo growth. *Bamboo Research*, 19(1), 74-78. [In Chinese]
- Zhou, G.M. (2006). Carbon storage, fixation, and distribution in Moso bamboo forest ecological system. (doctoral dissertation). Zhejiang University, Hangzhou, China.
- Zhu, Z. (2001). Sustainable development of the bamboo and rattan sectors in tropical China. China Forestry Publishing House.
- Zhuang, S., H. Ji, H. Zhang, and B. Sun. (2015). Carbon storage estimation of Moso bamboo (*Phyllostachys pubescens*) forest stands in Fujian, China. *Tropical Ecology*, 56(3), 383-391.

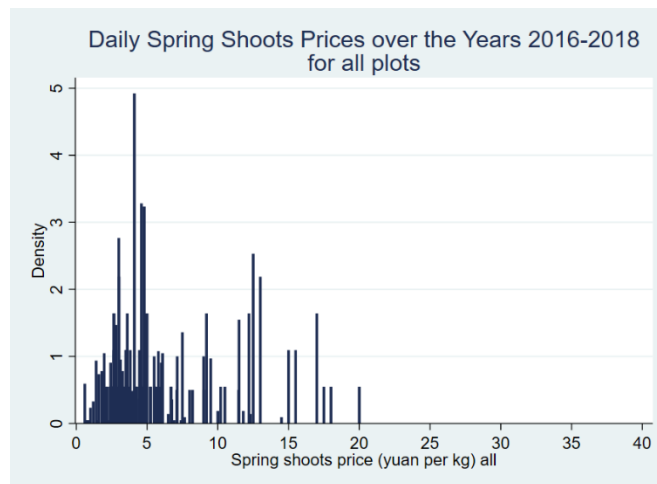
Figure 1. Bamboo Shoots Prices

(a) Winter Shoots Prices



Notes: Figure plots a histogram of the daily winter shoots price during winter shooting over the years 2016-2018 for all plots in our data set.

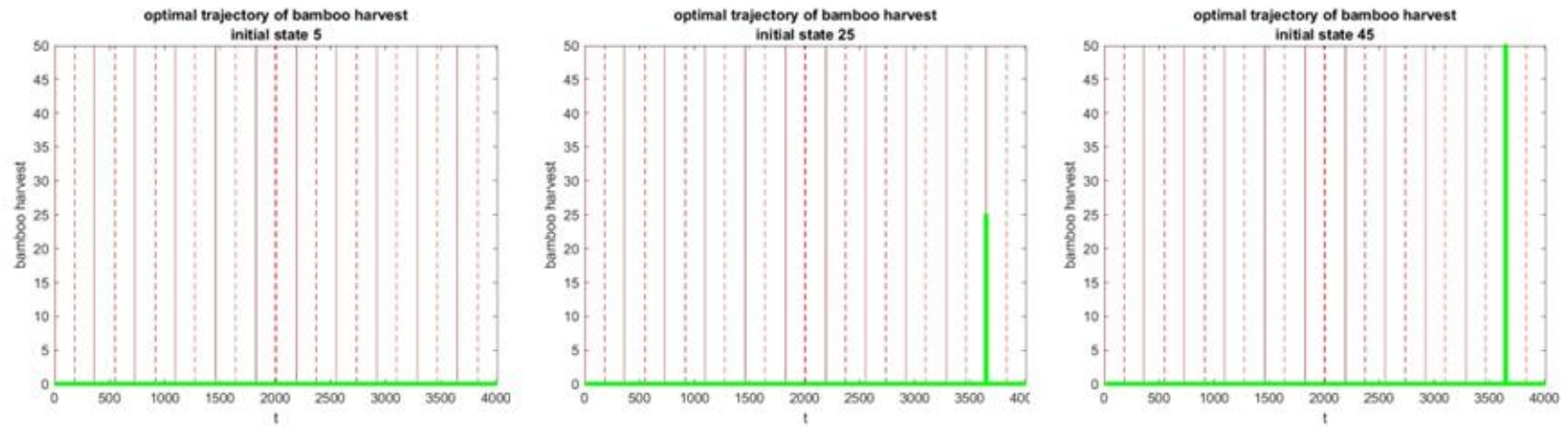
(b) Spring Shoots Prices



Notes: Figure plots a histogram of the daily winter shoots price during winter shooting over the years 2016-2018 for all plots in our data set.

Figure 4. Optimal Bamboo Stem Harvest

a) Bamboo Stem Harvest



b) Number of Bamboo Stem

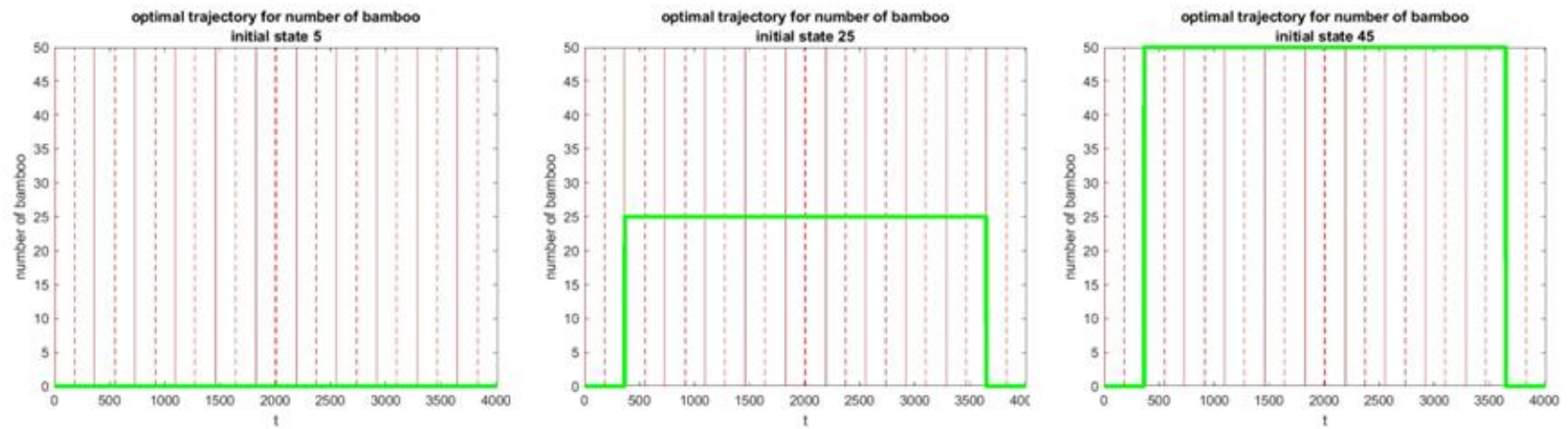
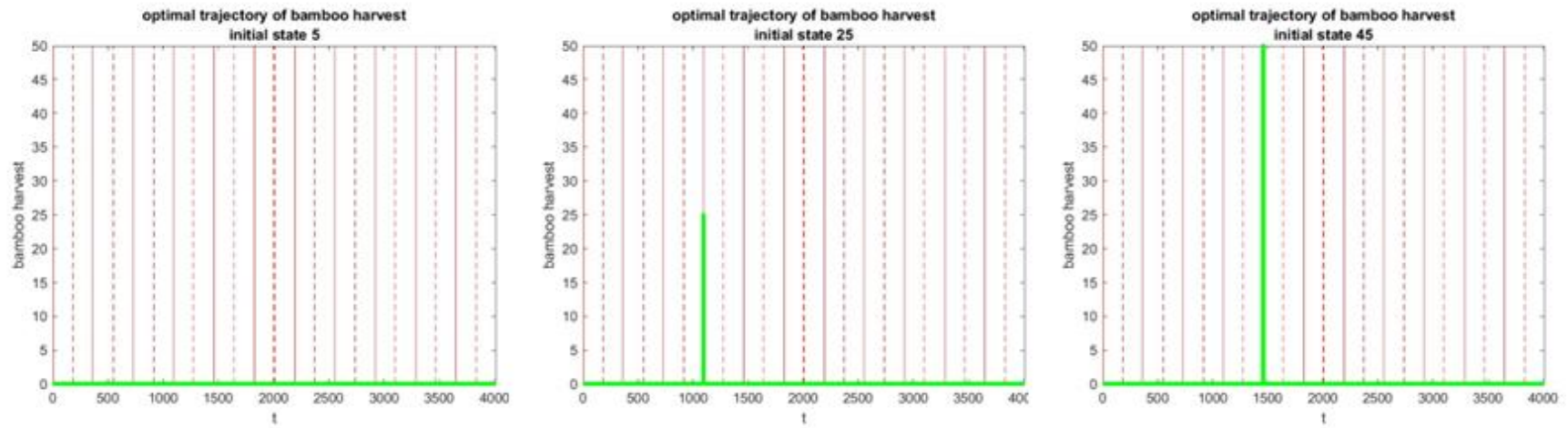


Figure 5. Optimal Bamboo Stem Harvest When Bamboo Stem Price is High

a) Bamboo Stem Harvest



b) Number of Bamboo Stem

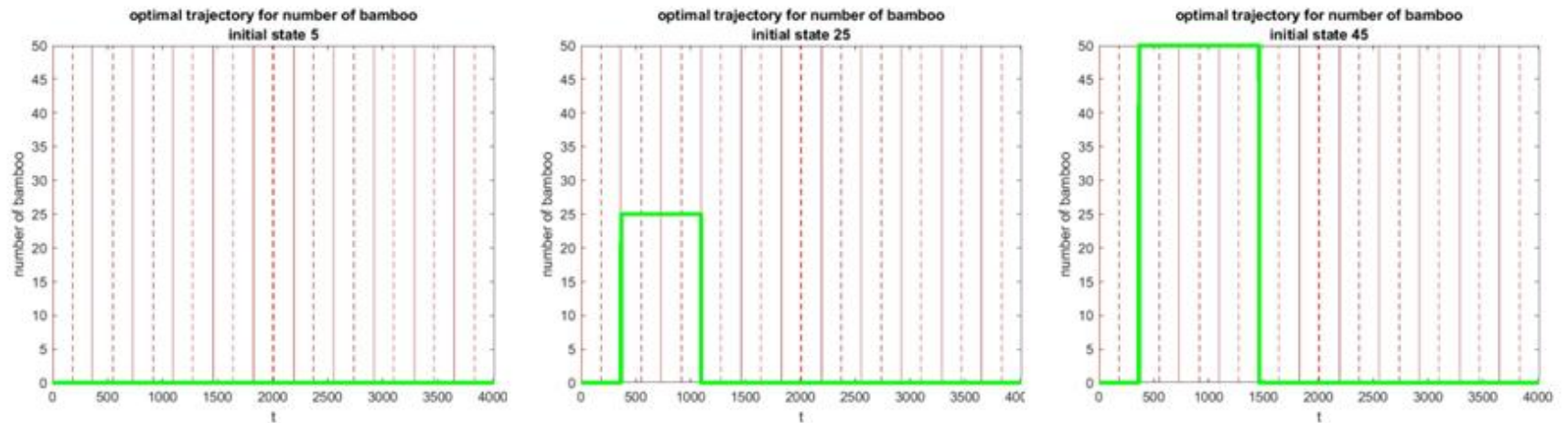


Figure 6. Daily Bamboo Shoots Harvest Policy Function

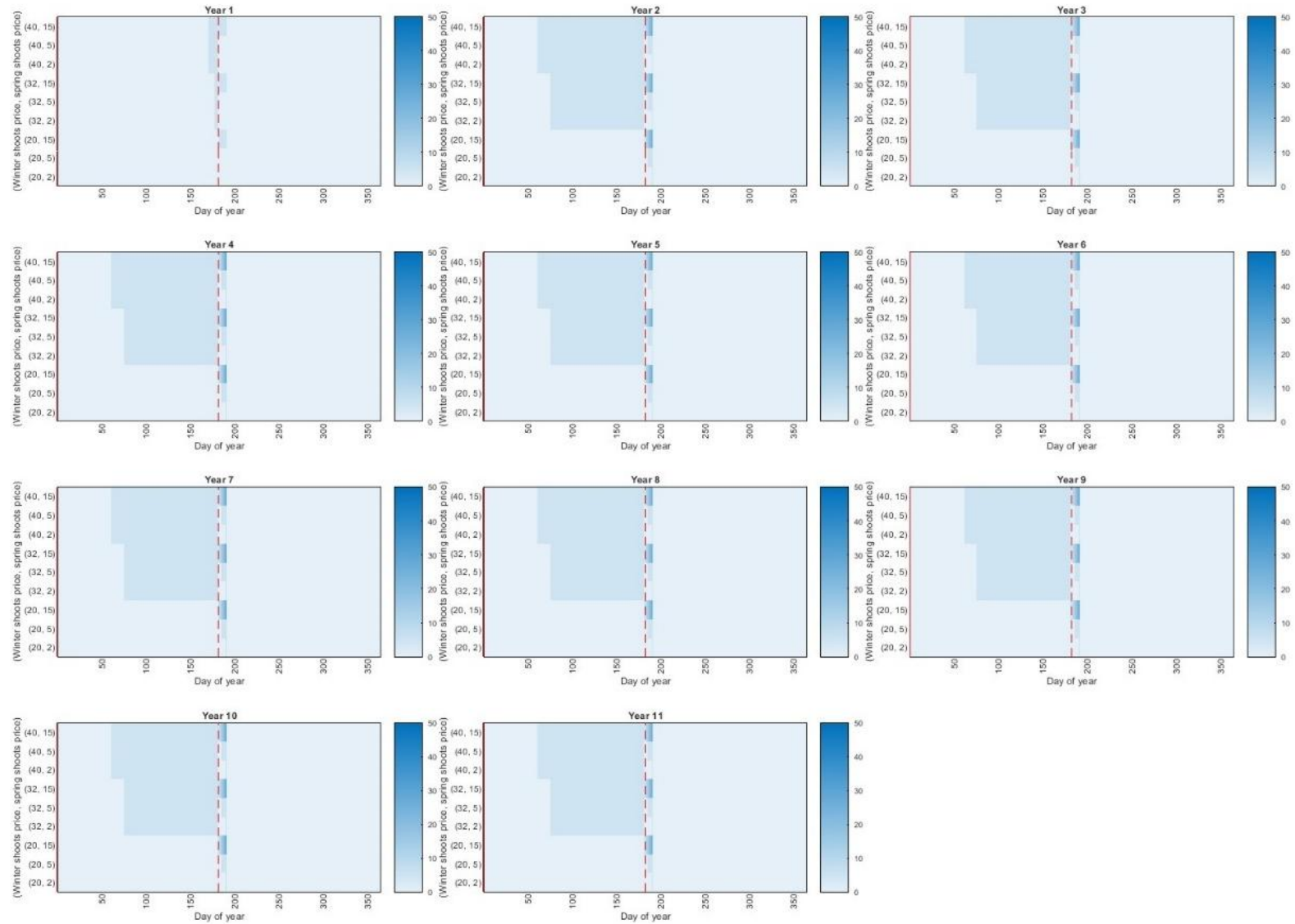


Figure 7. Daily Bamboo Shoots Harvest Policy Function When Number of Shoots is Very Low

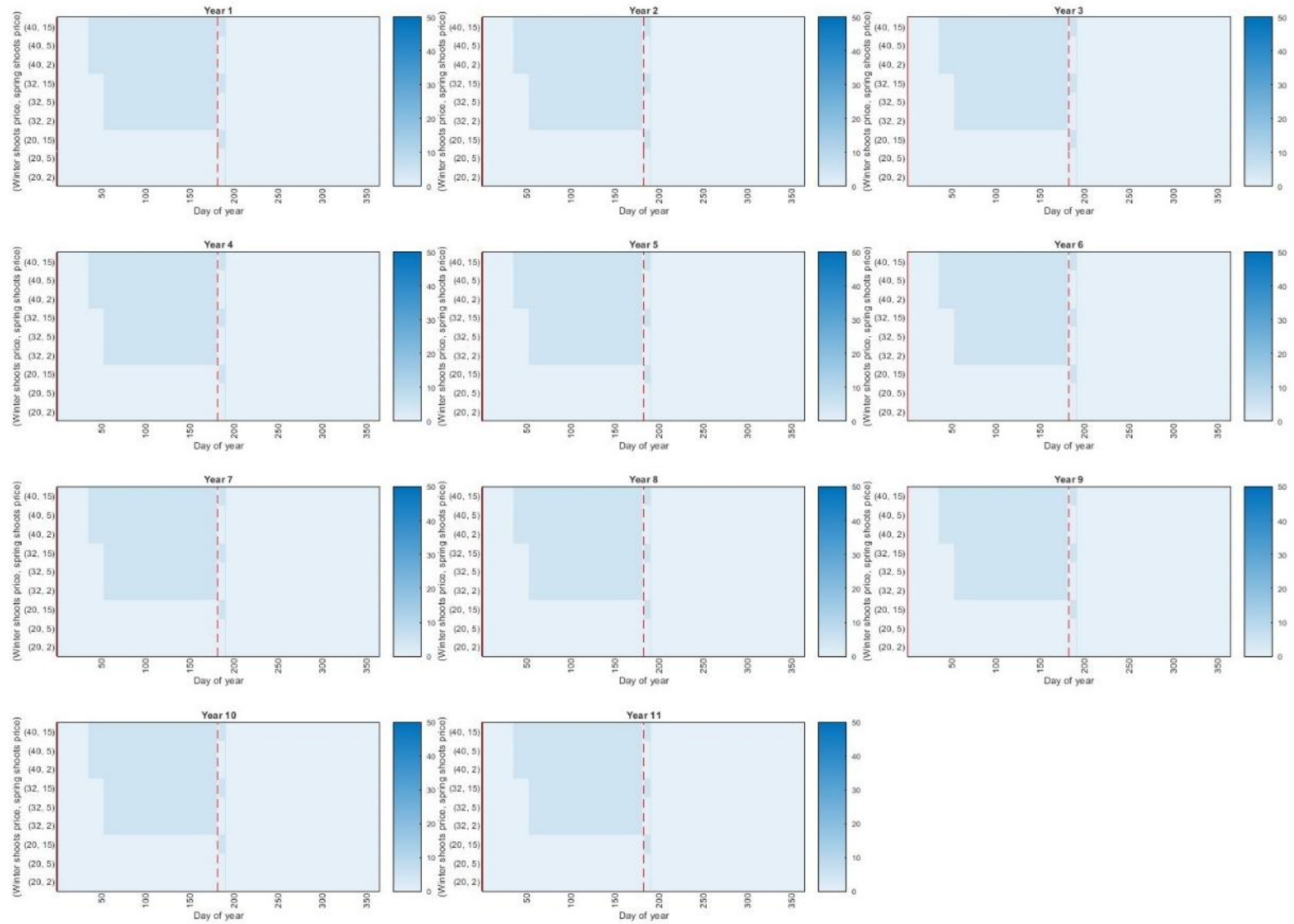


Figure 8. Daily Bamboo Shoots Harvest Policy Function When Risk Averse

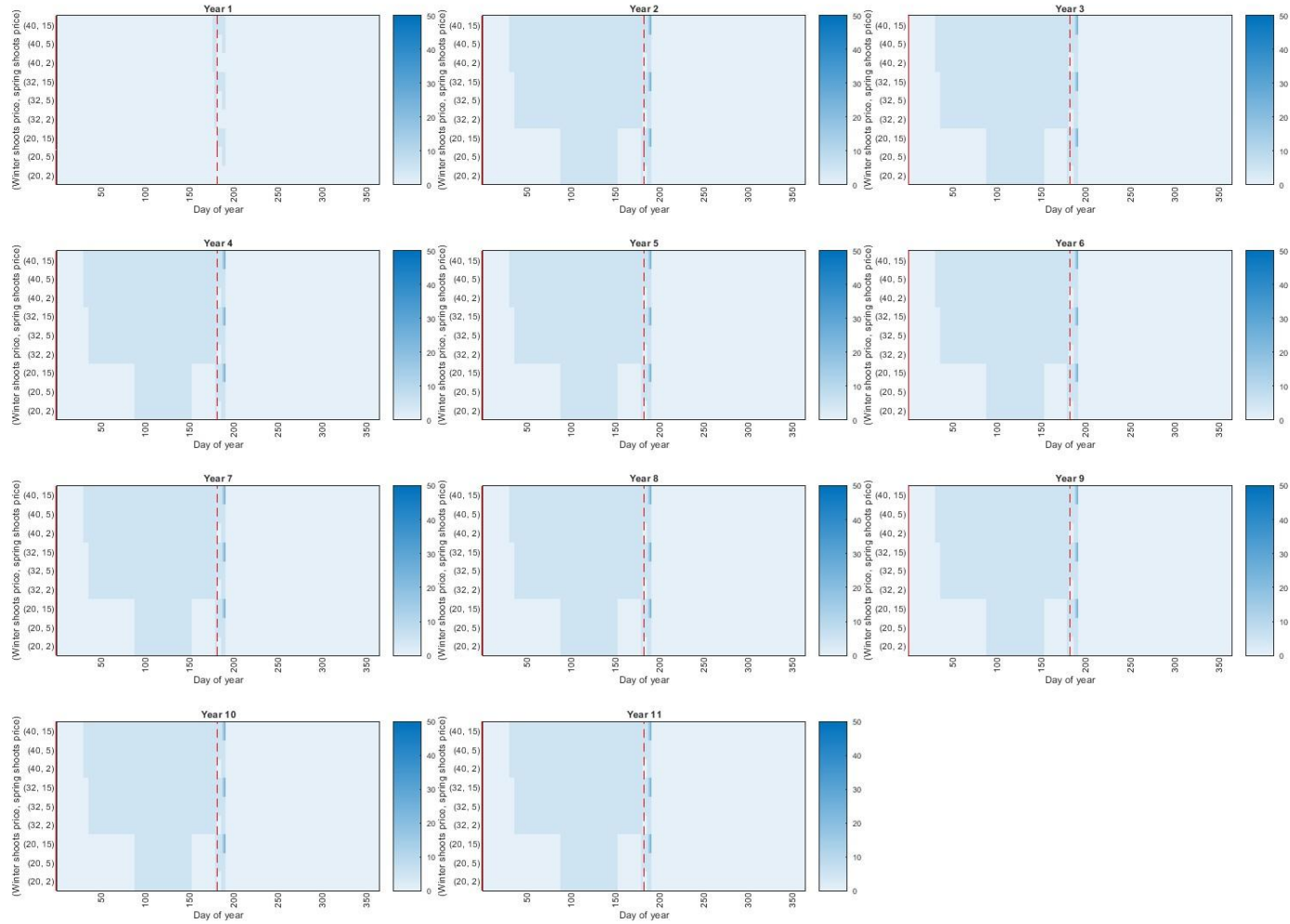
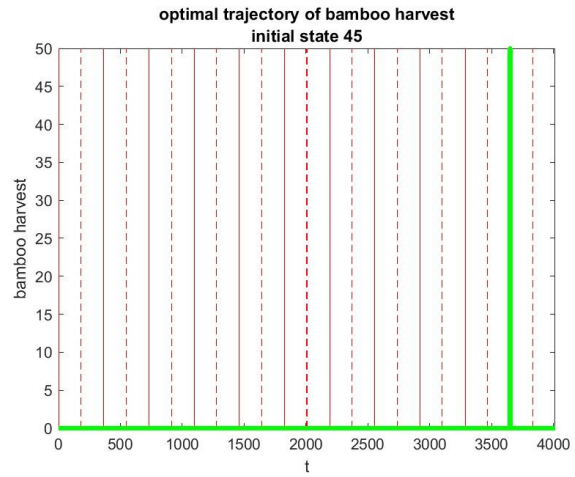
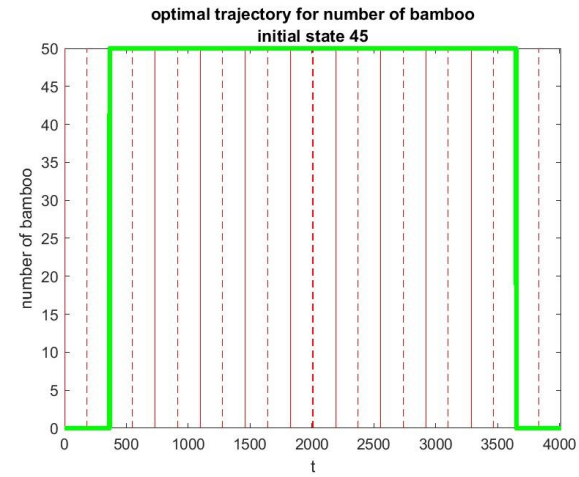


Figure 9. Example of Optimal Trajectories

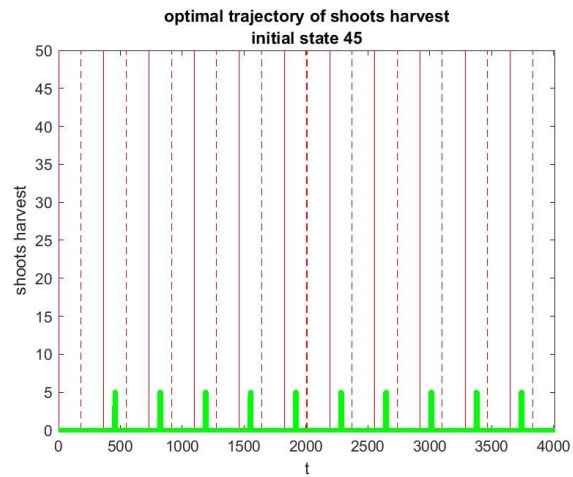
a) Bamboo Stem Harvest



c) Number of Bamboo Stem



b) Shoots Harvest



d) Number of Shoots

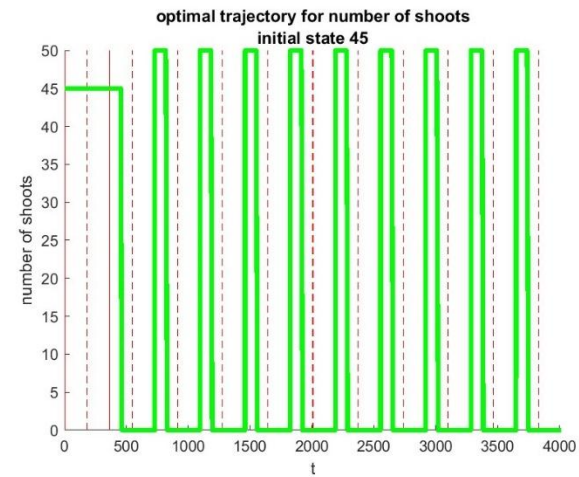
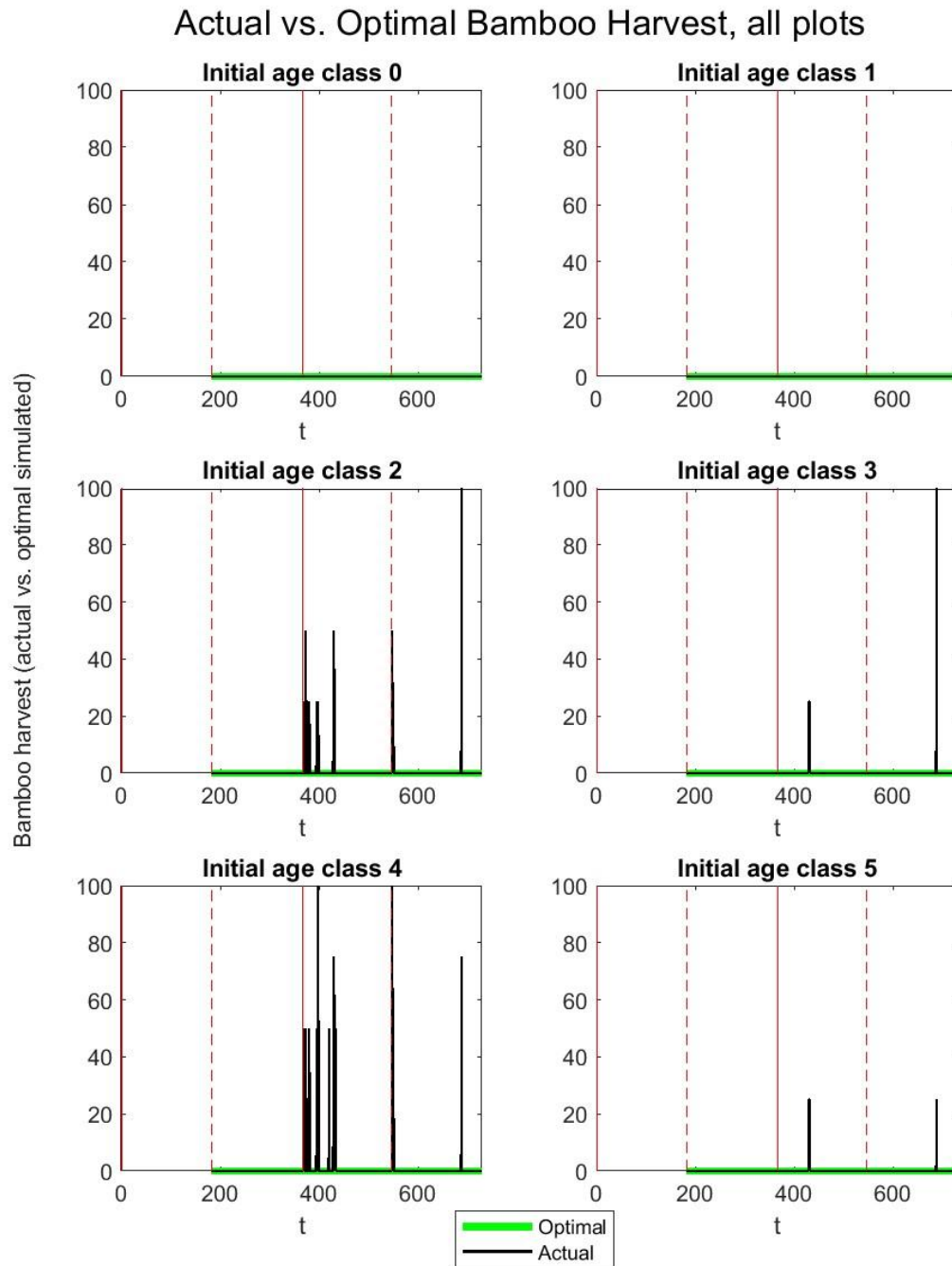
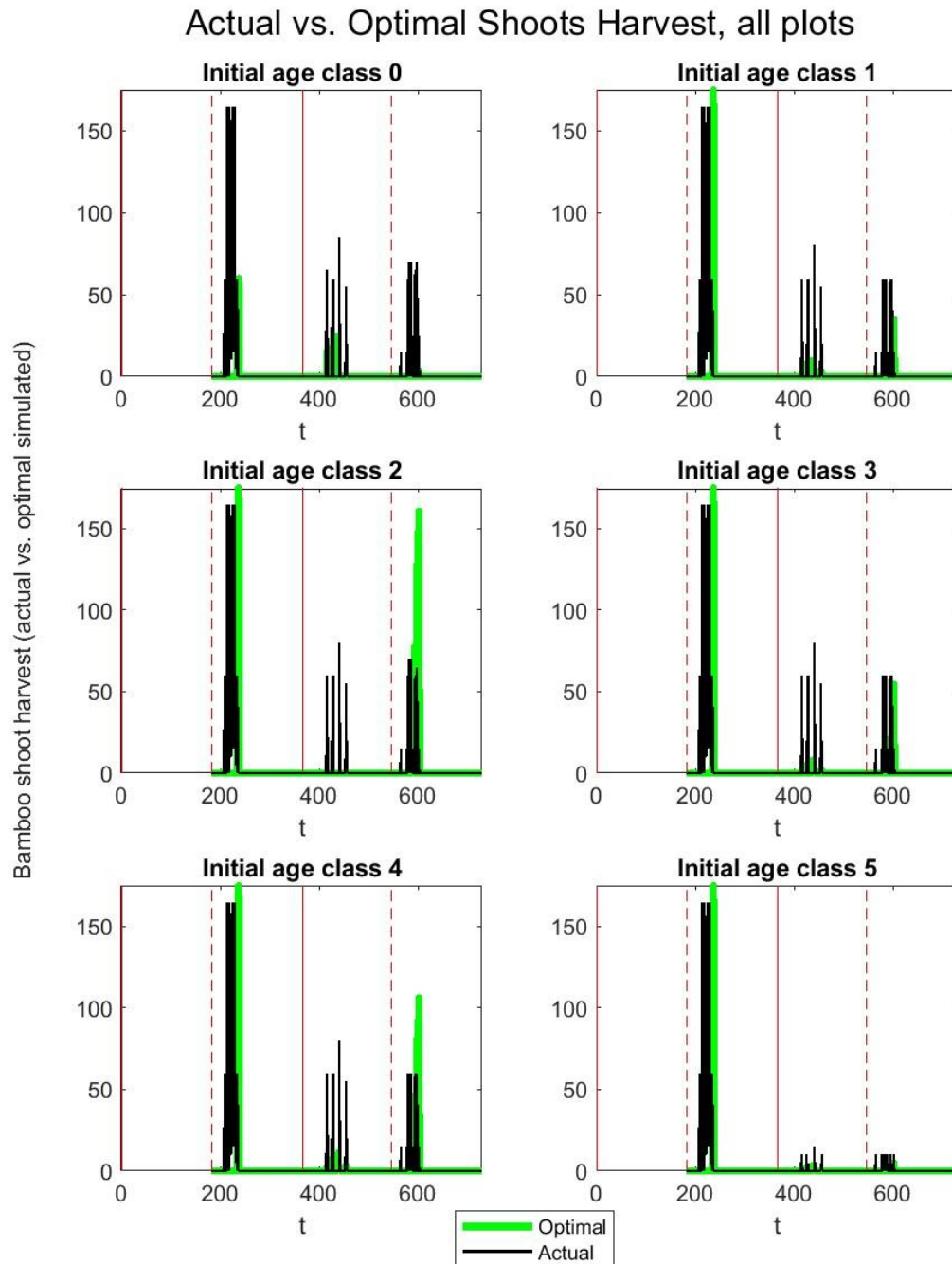


Figure 10: Optimal vs. Actual Bamboo Stem Harvests



Notes: Time series plots of the optimal and actual number of bamboo stem harvested by initial age class. Vertical lines in red that go from the top to the bottom of the graph denote September 1 (first day of winter shooting) of each year. Dashed vertical lines in red that go from the top to the bottom of the graph denote March 1 (first day of spring shooting) of each year.

Figure 11: Optimal vs. Actual Shoots Harvest



Notes: Time series plots of the optimal vs. actual number of bamboo shoots harvested on each sample plot. Vertical lines in red that go from the top to the bottom of the graph denote September 1 (first day of winter shooting) of each year. Dashed vertical lines in red that go from the top to the bottom of the graph denote March 1 (first day of spring shooting) of each year.

Table 1. Actual vs. Optimal Welfare**(a)**

PDV profits during days with data	Mean (Yuan)
Optimal	272
Actual	127
Optimal minus Actual	145

(b)

Expected PDV profits over 11-year horizon	Mean (Yuan)
Optimal	5,529
Actual	4,007
Optimal minus Actual	1,522

Notes: Table compares actual and optimal welfare, where welfare is defined as the present discounted value (PDV) of the entire stream of daily profits. Panel (a) compares actual and optimal PDV profits during the days with data, where optimal PDV profits during the days with data is calculated using the actual initial states and actual daily prices and precipitation; and the actual PDV profits during the days with data is calculated using the actual daily actions, states, prices, and precipitation. Panel (b) compares optimal expected PDV profits over the entire 11-year horizon, where optimal expected PDV profits over the entire 11-year horizon is given by the value function evaluated at the initial states, and takes an expectation over stochastic shocks prices and precipitation; and where actual expected PDV profits over the entire 11-year horizon is the actual PDV profits during the days with data calculated above plus the discounted continuation value evaluated at the actual state at end of data and assumes optimal behavior after the last day of data.

Table 2. Results from Dynamic Structural Model Estimating Annual Discount Factor

Structural Parameter	Actual (Assumed Value)	All (1)
annual discount factor β_y	0.9	1.000 *** (0.000)
# Observations		115,290
# Plots		35

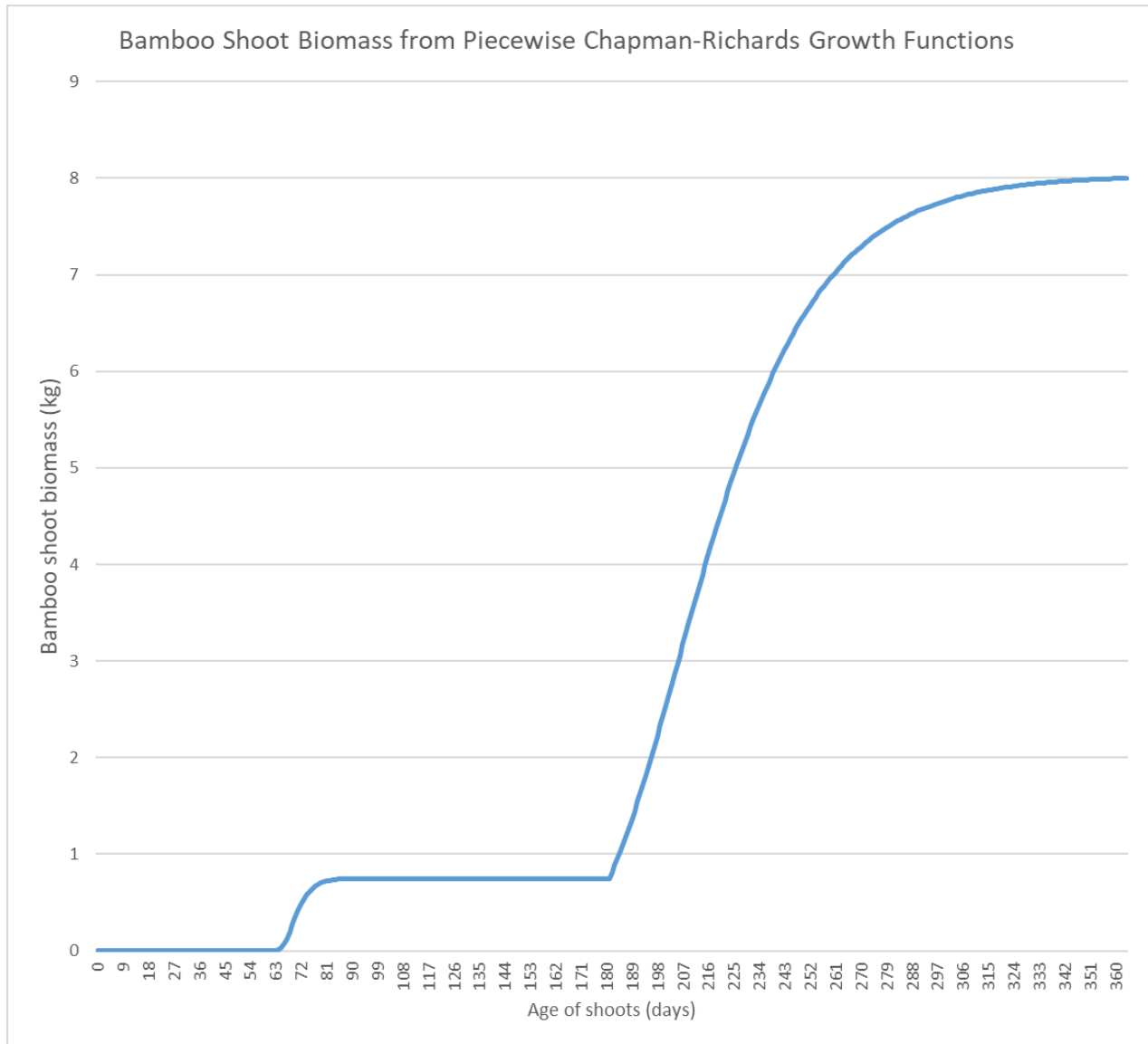
Notes: The structural parameter estimates are the parameter estimates from our specification of the structural model estimating net price parameters only for the entire sample (“All”). Bootstrapped standard errors in parentheses. Significance codes: *** $p < 0.001$, ** $p < 0.01$, * $p < 0.05$

Table 3. Results from Dynamic Structural Model Estimating Winter Shoot Growth

Structural Parameter	Actual (Assumed Value)	All (1)	Sian (2)	Shanchuan (3)
Winter shoots growth rate α_{s_w}	0.016	0.272 *** (0.005)	0.292 *** (0.045)	0.202 *** (0.009)
# Observations		115,290	65,880	49,410
# Plots		35	20	15

Notes: The structural parameter estimates are the parameter estimates from our specification of the structural model estimating winter shoot growth and inflection parameters only for the entire sample (“All”), Sian Township only (“Sian”), and Shanchuan Township only (“Shanchuan”). Bootstrapped standard errors in parentheses. Significance codes: *** $p < 0.001$, ** $p < 0.01$, * $p < 0.05$

Figure 12. Perceived Chapman-Richards Growth Function for Bamboo Shoots



Notes: Figure plots bamboo farmers' perceived Chapman-Richards growth function for winter shooting and spring shooting based on the parameter estimates for winter shoots growth rate α_{s_w} of 0.272 from our dynamic structural model in Table 3. We use separate Chapman-Richards growth functions for winter shooting and spring shooting. The first day of winter shooting is September 1. Winter shooting is from September 1 until February 28. The number of winter shooting days is therefore 181 days. The spring shooting period starts on March 1 and ends on August 31, the last day of the bamboo growth year. The number of spring shooting days is 184 days.

Table 4. Results from Dynamic Structural Model Estimating Shoots Cost Parameters

Structural Parameter	Actual (Assumed Values)	All (1)
winter shoots harvest cost parameter c_{s_w}	15	14.71*** (4.504)
spring shoots harvest cost parameter c_{s_s}	1.5	0.61*** (0.117)
shoots harvest cost convex cost parameter c_{s_2}	50	114.28*** (1.321)
# Observations		115,290
# Plots		35

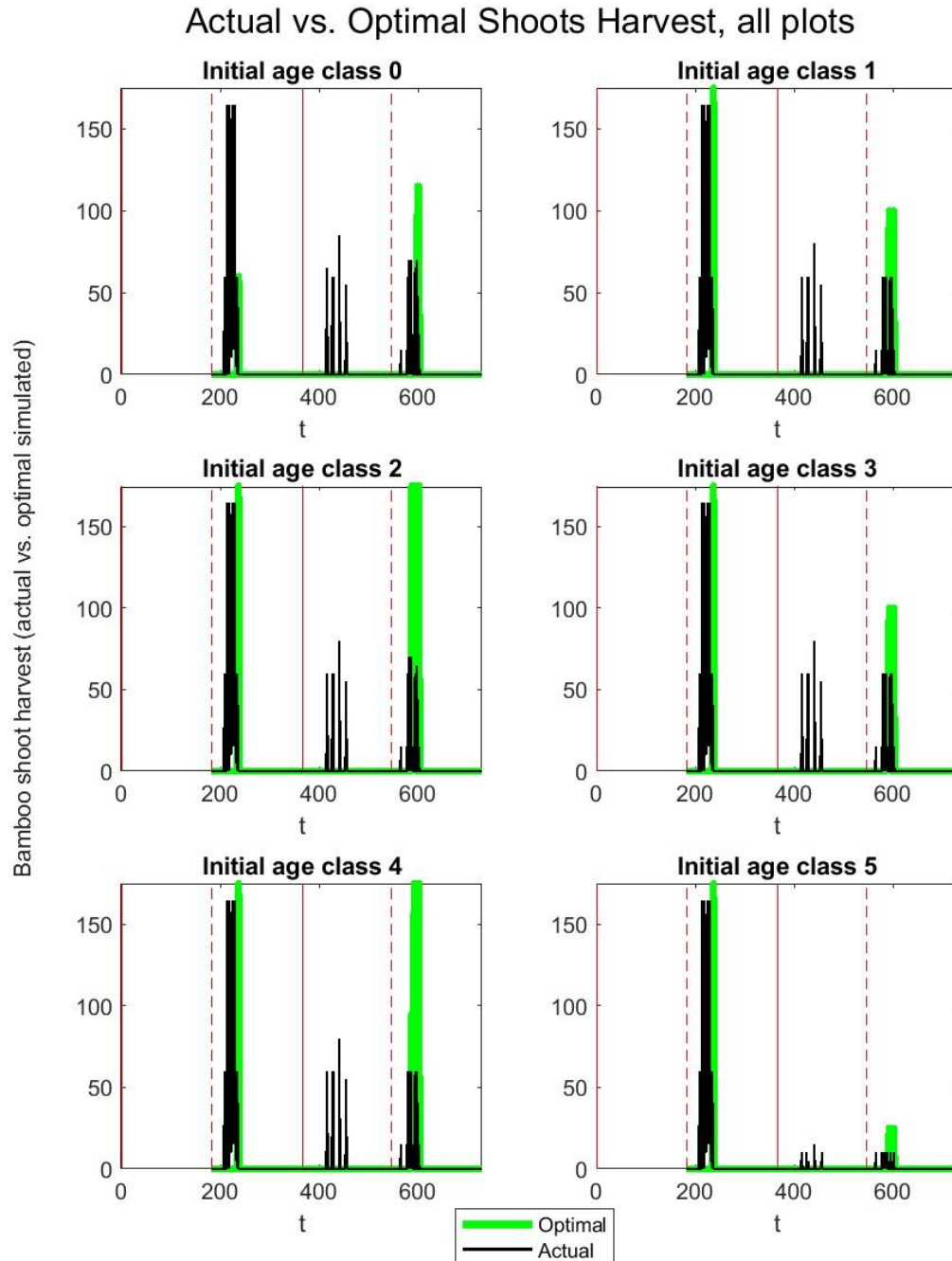
Notes: The structural parameter estimates are the parameter estimates from our specification of the structural model estimating net price parameters only for the entire sample (“All”). Bootstrapped standard errors in parentheses. Significance codes: *** $p < 0.001$, ** $p < 0.01$, * $p < 0.05$

Table 5. Results from Dynamic Structural Model Estimating Shoots Decline Probability

Structural Parameter	Actual (Assumed Value)	All (1)
Daily shoots decline probability during winter shooting	0.0333	0.000*** (0.0000)
# Observations		115,290
# Plots		35

Notes: The structural parameter estimates are the parameter estimates from our specification of the structural model estimating net price parameters only for the entire sample (“All”). Bootstrapped standard errors in parentheses. Significance codes: *** $p < 0.001$, ** $p < 0.01$, * $p < 0.05$

Figure 13: Optimal vs. Actual Shoots Harvest using structural parameter estimate for winter shoots decline probability



Notes: Time series plots of the perceived optimal vs. actual number of bamboo shoots harvested on each sample plot, using the structural parameter estimate for the daily winter shoots decline probability from Table 5. Vertical lines in red that go from the top to the bottom of the graph denote September 1 (first day of winter shooting) of each year. Dashed vertical lines in red that go from the top to the bottom of the graph denote March 1 (first day of spring shooting) of each year.

Table 6. Actual vs. Optimal Welfare using structural parameter estimate for winter shoots decline probability

(a)

PDV profits during days with data	Mean (Yuan)
Optimal	722
Actual	127
Optimal minus Actual	595

(b)

Expected PDV profits over 11-year horizon	Mean (Yuan)
Optimal	12,525
Actual	9,483
Optimal minus Actual	3,042

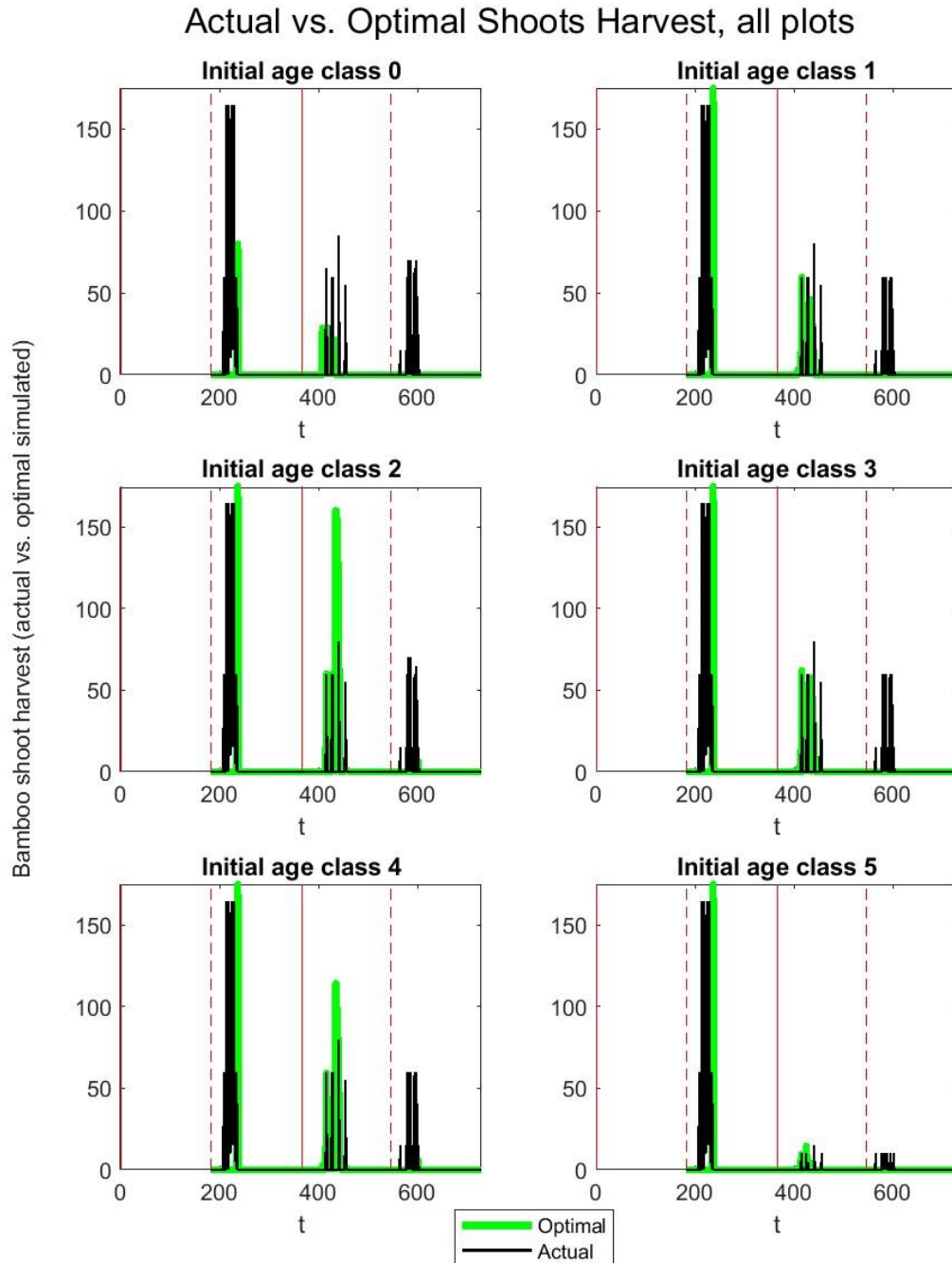
Notes: Table compares actual and optimal welfare, where welfare is defined as the present discounted value (PDV) of the entire stream of daily profits, using the structural parameter estimate for winter shoots decline probability. Panel (a) compares actual and optimal PDV profits during the days with data, where optimal PDV profits during the days with data is calculated using the actual initial states and actual daily prices and precipitation; and the actual PDV profits during the days with data is calculated using the actual daily actions, states, prices, and precipitation. Panel (b) compares optimal expected PDV profits over the entire 11-year horizon, where optimal expected PDV profits over the entire 11-year horizon is given by the value function evaluated at the initial states, and takes an expectation over stochastic shoots prices and precipitation; and where actual expected PDV profits over the entire 11-year horizon is the actual PDV profits during the days with data calculated above plus the discounted continuation value evaluated at the actual state at end of data and assumes optimal behavior after the last day of data.

Table 7. Results from Dynamic Structural Model Estimating Coefficient of Constant Relative Risk Aversion

Structural Parameter	Actual (Assumed Value)	All (1)	Sian (2)	Shanchuan (3)
Coefficient of constant relative risk aversion η	0 (risk neutral)	0.805 *** (0.008)	0.788 *** (0.002)	0.121 (0.138)
# Observations		115,290	65,880	49,410
# Plots		35	20	15

Notes: The structural parameter estimates are the parameter estimates from our specification of the structural model allowing for risk aversion and estimating the coefficient of constant relative risk aversion parameter only for the entire sample (“All”), Sian Township only (“Sian”), and Shanchuan Township only (“Shanchuan”). Bootstrapped standard errors in parentheses. Significance codes: *** $p < 0.001$, ** $p < 0.01$, * $p < 0.05$

Figure 14: Optimal vs. Actual Shoots Harvest using structural parameter estimate for coefficient of constant relative risk aversion



Notes: Time series plots of the perceived optimal vs. actual number of bamboo shoots harvested on each sample plot, using the structural parameter estimate for the coefficient of constant relative risk aversion from Table 7. Vertical lines in red that go from the top to the bottom of the graph denote September 1 (first day of winter shooting) of each year. Dashed vertical lines in red that go from the top to the bottom of the graph denote March 1 (first day of spring shooting) of each year.

Table 8. Actual vs. Optimal Welfare using structural parameter estimate for coefficient of constant relative risk aversion

(a)

PDV profits during days with data	Mean (Yuan)
Optimal	58
Actual	-273
Optimal minus Actual	331

(b)

Expected PDV profits over 11-year horizon	Mean (Yuan)
Optimal	241
Actual	-98
Optimal minus Actual	339

Notes: Table compares actual and optimal welfare, where welfare is defined as the present discounted value (PDV) of the entire stream of daily profits, using the structural parameter estimate for coefficient of constant relative risk aversion. Panel (a) compares actual and optimal PDV profits during the days with data, where optimal PDV profits during the days with data is calculated using the actual initial states and actual daily prices and precipitation; and the actual PDV profits during the days with data is calculated using the actual daily actions, states, prices, and precipitation. Panel (b) compares optimal expected PDV profits over the entire 11-year horizon, where optimal expected PDV profits over the entire 11-year horizon is given by the value function evaluated at the initial states, and takes an expectation over stochastic shocks prices and precipitation; and where actual expected PDV profits over the entire 11-year horizon is the actual PDV profits during the days with data calculated above plus the discounted continuation value evaluated at the actual state at end of data and assumes optimal behavior after the last day of data.

Appendix A. Chapman-Richards Growth Model

There are multiple available models to measure the growth and productivity of a Moso bamboo plant. Allometric equations and logistic functions have been used for characterizing bamboo growth. An allometric model predicts biomass using diameter at breast height. Biological studies suggest using the Chapman-Richards model (Richards, 1959), which is a flexible growth model for plants (Liu and Li, 2003), and has been used to predict Moso bamboo height (Yen, 2016). In addition to a model for bamboo stem growth, we also need a model for bamboo shoot growth. Bamboo shoot biomass accumulation has been described using logistic curve (Zhou, 1998). The literature constructing a growth model for bamboo shoots is sparse, however, and even less is known about undergrowth winter shoot growth. Thus, as the Chapman-Richards model is a generalized logistic curve, and since bamboo shoots are young bamboo plants, we adopt and separately parameterize separate Chapman-Richards models for winter shoot growth and spring shoot growth as well.

We therefore use a separate Chapman-Richards model for the growth of each of the three types j of bamboo products: winter shoots s_w , spring shoots s_s , and bamboo stem b . The Chapman-Richards model is given by:

$$Y_j = A_j \cdot (1 - Q_j e^{-\alpha_j t_j})^{1/(1-v_j)},$$

where Y_j is the total biomass for bamboo product j in a single bamboo plant; t_j is the age of bamboo (in days for winter and spring shoots, and in years for bamboo stem); and A_j , α_j , Q_j , v_j are parameters whose interpretation and values for each of the bamboo product types j are discussed in more detail below. The biomass we predict using the Chapman-Richards model cannot be directly used to calculate total revenue in per period payoff because shoots and stem price are recorded in yuan per kilogram, where the weight in kilograms contains both biomass and water. We need coefficients that transfer biomass into kilograms for both bamboo forest products. The Chapman-Richard's model predicts biomass Y_b and Y_s in units of kilograms.

Our calibrated piecewise Chapman-Richards growth function for bamboo shoots, which combines a Chapman-Richards growth function for winter shoots with a separate Chapman-Richards growth function for spring shoots, is presented in Figure A.1. Our calibrated Chapman-Richards growth function for bamboo stem growth is presented in Figure A.2. We discuss our calibration in more detail below.

A.1. Parameters in Chapman-Richards model of bamboo shoot growth for winter shoots

To date there have not been any studies based on the biomass of winter shoots growth, and there are very few studies on Moso bamboo underground development. We calibrate our model for winter shoots growth to capture what previous research has found about winter shoots, and also to better match the actual winter shoots harvest decisions in the data. In particular, previous research that has found winter shoots are dormant from December onwards (Su, 2012; Sun et al. 2017; Wei et al., 2017; Hu et al., 2020) and that over half of winter shoots growth happens during November (Wei et al., 2017). In our data, some plots have harvested winter shoots as early as late October when the winter shoots price is very high, but right now even with very high winter shoots price our dynamic model does not show this to be optimal since our current winter shoots biomass growth function has winter shoots biomass to be very low in late October. Since it is unlikely that farmers are so completely wrong, we additionally calibrate our winter shoots growth function so that their biomass in late October is higher.

We use the following Chapman-Richards model for winter shoot growth:

$$Y_{s_w} = A_{s_w} \cdot (1 - Q_{s_w} e^{-\alpha_{s_w} t_{s_w}})^{1/(1-v_{s_w})},$$

where Y_{s_w} is the total biomass of a winter shoot of age t_{s_w} days. The shoots biomass is basically the dried weight of shoots. The Chapman-Richards model for winter shoot growth yields the following equation of motion for winter shoot biomass:

$$\frac{dY_{s_w}(t_{s_w})}{dt_{s_w}} = \frac{\alpha_{s_w}}{1-v_{s_w}} A_{s_w} Q_{s_w} (1 - Q_{s_w} e^{-\alpha_{s_w} t_{s_w}})^{\frac{1}{1-v_{s_w}}-1} e^{-\alpha_{s_w} t_{s_w}}.$$

At the inflection point, where $\frac{d^2 Y_{s_w}(t_{s_w})}{dt_{s_w}^2} = 0$, we have:

$$v_{s_w} = 1 - Q_{s_w} e^{-\alpha_{s_w} t_{s_w}}$$

For the age t_{s_w} of winter shoots, due to its relatively short period of growth, age of bamboo shoots is measured in days rather than years. Winter shooting is from September 1 until February 28. The number of winter shooting days $t_{s_w}^{\max}$ is therefore 181 days.

The parameter A_{s_w} is related to the maximum possible winter shoot biomass for a single winter shoot. According to a video from Zhejiang province of winter shoots in late November

2020 (“Zhejiang Local Winter Shoots Trading on Site”), it is very rare to have winter shoots that is 0.75 kg in Zhejiang province, which is 0.375 kg in dry biomass (using our transition of 0.5 between weight and biomass). According to Yonghua Qiu, a senior engineer from Suichang Bureau of Forestry, where Suichang is a township in Zhejiang, the maximum possible winter shoots weight could be go up to as large as more than 0.5 kg in previous years, while since 2013 is a dry year, winter shoots only grow up to 0.25 kg. It is also rare to harvest winter shoots that is more than 1.5 kg (Zeng and Peng, 2013). In our numerical model, we set $Y_{s_w}^{\max}$, the maximum possible winter shoots biomass at the end of winter shooting (day $t_{s_w}^{\max}$), to be 0.75 kg. This is to say, the maximum possible winter shoots biomass at the end of winter shooting will be 1.5 kg per shoot in weight, and thus 0.75 kg in biomass. We then calibrate A_{s_w} , which is the maximum possible winter shoot biomass as the number of days goes to infinity (which is well past the end of winter shooting) as follows:

$$A_{s_w} = Y_{s_w}^{\max} / (1 - Q_{s_w} e^{-\alpha_{s_w} t_{s_w}^{\max}})^{1/(1-v_{s_w})}.$$

For the growth rate α_{s_w} for winter shoots, the growth rate for bamboo shoots is more rapid than that for bamboo stem (Song et al., 2016). To date there have not been any studies based on the biomass of winter shoots growth, and there are very few studies on Moso bamboo underground development. Wei et al. (2017) describes underground bamboo shoots development, but only have a time trend of growth of winter shoots in terms of individual height, not biomass. Hu et al. (2020) study gene expression for each month of shoots growth from September to the following year’s April. The number of genes expressed in the shoots is a measure of shoots growth activity level, as well as biomass accumulation. Since Hu et al. (2020) find the winter shoots express fewer genes than spring shoots do, we choose a growth rate α_{s_w} for winter shoots that is slightly lower than the growth rate α_{s_s} for spring shoots that we specify below. In particular, since we set the growth rate α_{s_s} for spring shoots to 0.036 below, and winter shoots is expressing less genes compared to spring shoots, we set the growth rate α_{s_w} for winter shoots to 0.016.

For the biological constant Q_{s_w} , which is related to the initial winter shoot biomass at the beginning of winter shooting, we set Q_{s_w} to 1 because we want the biomass of winter shoots to be equal to 0 on day $t_{s_w} = 0$.

The parameter v_{sw} is related to the inflection point of the Chapman-Richards growth function, where the time rate of change in winter shoot biomass reaches its maximum. This allometric constant lies between zero and one for the Chapman-Richards growth model (Fekedulegn et al., 1999; Liu and Li, 2003). Wei et al. (2017) study the growth of Moso underground shoots by measuring individual shoot diameter from August to February the following year, and find that Moso bamboo shoots grow actively from late August to late November, have the fastest growth from early to late November, during which over half of the underground shoots growth takes place. Bamboo shoots become dormant from December because of the cold weather until next March (Wei et al., 2017; Hu et al., 2020). Sun et al. (2017) find that underground shoots formed in September; developed into underground shoots in October and November. Shoot growth rate slowed down and almost stopped in December until February the following year. Shoots growth resumes in March and emerged from ground (Sun et al. 2017). This is to say, the fastest growing time is around day 76 (mid November) of the entire winter shoot growth process. We therefore set the winter day of inflection t_{sw}^{infl} to be 76. We calculate v_{sw} using

$$v_{sw} = 1 - Q_{sw} e^{-\alpha_{sw} t_{sw}^{\text{infl}}}.$$

and iterating on v_{sw} until convergence.

A.2. Parameters in Chapman-Richards model of bamboo shoot growth for spring shoots

We use the following Chapman-Richards model for spring shoot growth:

$$Y_{s_s} = A_{s_s} \cdot (1 - Q_{s_s} e^{-\alpha_{s_s} t_{s_s}})^{1/(1-v_{s_s})},$$

where Y_{s_s} is the total biomass of a spring shoot of age t_{s_s} days.

For the age t_{s_s} of spring shoots, due to its relatively short period of growth, age of bamboo shoots is measured in spring shooting days rather than years. The spring shooting period starts on March 1 and ends on August 31, the last day of the bamboo growth year. In other words, shoots do not become bamboo stem until the end of the bamboo growth year. This is because, as seen in Song et al. (2016), the bamboo still seems to grow very fast following the spring shoot growth function until the end of the bamboo growth year. Thus, the number of spring shooting days $t_{s_s}^{\text{max}}$ we use in our numerical model is 184 days. Bamboo shoots grow into a bamboo plant after the end of spring shooting (Shi et al., 2013).

The parameter A_{s_w} is related to the maximum possible spring shoot biomass for a single spring shoot. Xu et al. (2011) study the time trend of above ground biomass in Lin'an city, Zhejiang Province, and find that on spring shooting day 88, the spring shoot biomass is approximately 8.25 kg in dry weight. Song et al. (2016) shows shoots biomass at the end of August to be ~8 kg. In our numerical model, we set $Y_{s_s}^{\max}$, the maximum possible spring shoots biomass at the end of spring shooting (day $t_{s_s}^{\max}$), to be 8 kg. We then calibrate A_{s_s} , which is the maximum possible spring shoot biomass as the number of spring shooting days goes to infinity (which is well past the end of spring shooting) as follows:

$$A_{s_s} = Y_{s_s}^{\max} / (1 - Q_{s_s} e^{-\alpha_{s_s} t_{s_s}^{\max}})^{1/(1-v_{s_s})}.$$

For the growth rate α_{s_s} for spring shoots, the growth rate for bamboo shoots is more rapid than that for bamboo stem (Song et al., 2016). Based on Song et al. (2016), the growth rate for spring shoots at the end of April is 0.036 per day. We therefore set our spring shoot growth rate α_{s_s} to 0.036.

The biological constant Q_{s_s} is related to the initial spring shoot biomass at the beginning of spring shooting. Since Q_{s_s} is based on the biomass of spring shoots at the beginning of spring shooting, then this should be calculated based on the biomass at the end of winter shooting. In other words, we use the biomass on the last day of winter shooting to calculate Q_{s_s} . The biomass on the last day of winter shooting, $Y_{s_w}^{\max}$, is the Chapman-Richards growth function for winter shoots evaluated on the last day of winter shooting. We then calculate Q_{s_s} as:

$$Q_{s_s} = \frac{1 - (Y_{s_w}^{\max} / Y_{s_s}^{\max})^{1-v_{s_s}}}{1 - (Y_{s_w}^{\max} / Y_{s_s}^{\max})^{1-v_{s_s}} e^{-\alpha_{s_s} t_{s_s}^{\max}}}.$$

The parameter v_s is related to the inflection point of the Chapman-Richards growth function, where the time rate of change in spring shoot biomass reaches its maximum. According to Song et al. (2016), the maximum growth rate occurs at the end of April, which is around 60 days of spring shooting. We take the maximum growth rate for spring shoots as occurring at ~60 days of spring shooting. We therefore set the spring day of inflection $t_{s_s}^{\text{infl}}$ to be 60. We calculate v_{s_s} using:

$$v_{s_s} = 1 - Q_{s_s} e^{-\alpha_{s_s} t_{s_s}^{\text{infl}}}.$$

and iterating on v_{s_s} until convergence.

A.3. Parameters in Chapman-Richards model of bamboo stem growth

We use the following Chapman-Richards model for bamboo stem growth:

$$Y_b = A_b \cdot (1 - Q_b e^{-\alpha_b t_b})^{1/(1-v_{ss})},$$

where Y_b is the total biomass of a bamboo stem of age t_b years.

For the age t_b of bamboo forest in years, Moso bamboo stems reach their maximum biomass at age 4-5 years (Zhang et al., 2014; Zhuang et al., 2015), do not increase significantly in biomass after 4.62 years (Zhuang et al., 2015), and mature at age 5-6 years (Yen and Lee, 2011). We assume Moso bamboo stem biomass does not increase after t_b^{\max} years, and set t_b^{\max} to 8 years.

For A_b , which is related to the maximum possible bamboo stem biomass for a single bamboo plant in the specific area, the maximum possible bamboo biomass for a single bamboo plant depends on land quality such as slope, precipitation, soil type, and temperature of the bamboo field we are interested in. Yen (2016) calculate maximize stem biomass for Moso bamboo in central Taiwan in its 5th year growth to be 15.88 kg per plant with standard deviation of 2.51 kg. Zhang et al. (2014) find that the maximum stem biomass for an eight-year-old Moso bamboo has average biomass of 15.06 kg, with a standard deviation of 6.58 kg. Moso bamboo with longer age will have higher maximum stem biomass, while stem biomass accumulation slow down in the mature age for Moso bamboo, which is generally at age 5-6 years (Yen and Lee, 2011). In our numerical model, based on the means in the previous literature, we set Y_b^{\max} , the maximum possible bamboo stem biomass at the end of t_b^{\max} years, to be 15.5 kg. We then calibrate A_b , which is the maximum possible bamboo stem biomass as the number of years goes to infinity (which is well past t_b^{\max}) as follows:

$$A_b = Y_b^{\max} / (1 - Q_b e^{-\alpha_b t_b^{\max}})^{1/(1-v_b)}.$$

For the growth rate α_b for bamboo stem, the growth rate for Moso bamboo differs with studies as well. According to Xu et al. (2011), the major biomass accumulation occurred along with the fast elongation of bamboo stem in the early stage of bamboo growth. In the stage where first shoot shell detached and branch emergence, bamboo biomass tripled. To estimate the biomass accumulation rate for Moso bamboo, we compare bamboo stem biomass in different age groups. According to Zhang et al. (2014), the growth rate for bamboo stem biomass over four 2-year stages is in the range of 0.060 to 0.196 per 2-year stage, or an average of 0.03 to 0.098 per year. Based on Song et al. (2016), the growth rate after 4 months of shooting (in August before the first full

bamboo growth year) is 0.75 per year. In our numerical model, we set the growth rate α_b for bamboo stem to 0.75.

The biological constant Q_b , which is related to the initial bamboo stem biomass at the beginning of the first bamboo growth year. For bamboo stem, we model the growth of bamboo stem starting from the end of spring shooting, when bamboo shoots become bamboo stem. At the beginning of its full bamboo growth year (i.e., at the beginning of bamboo growth year age 1), the initial bamboo stem biomass is the maximum bamboo shoot biomass at the end of spring shooting. The end of spring shooting in years is $t_{b0} = (t_{sw}^{\max} + t_{ss}^{\max})/365$. The initial bamboo stem biomass at the end of spring shooting (year t_{b0}) is the maximum bamboo shoot biomass Y_{ss}^{\max} at the end of spring shooting. We then calculate Q_{ss} as:

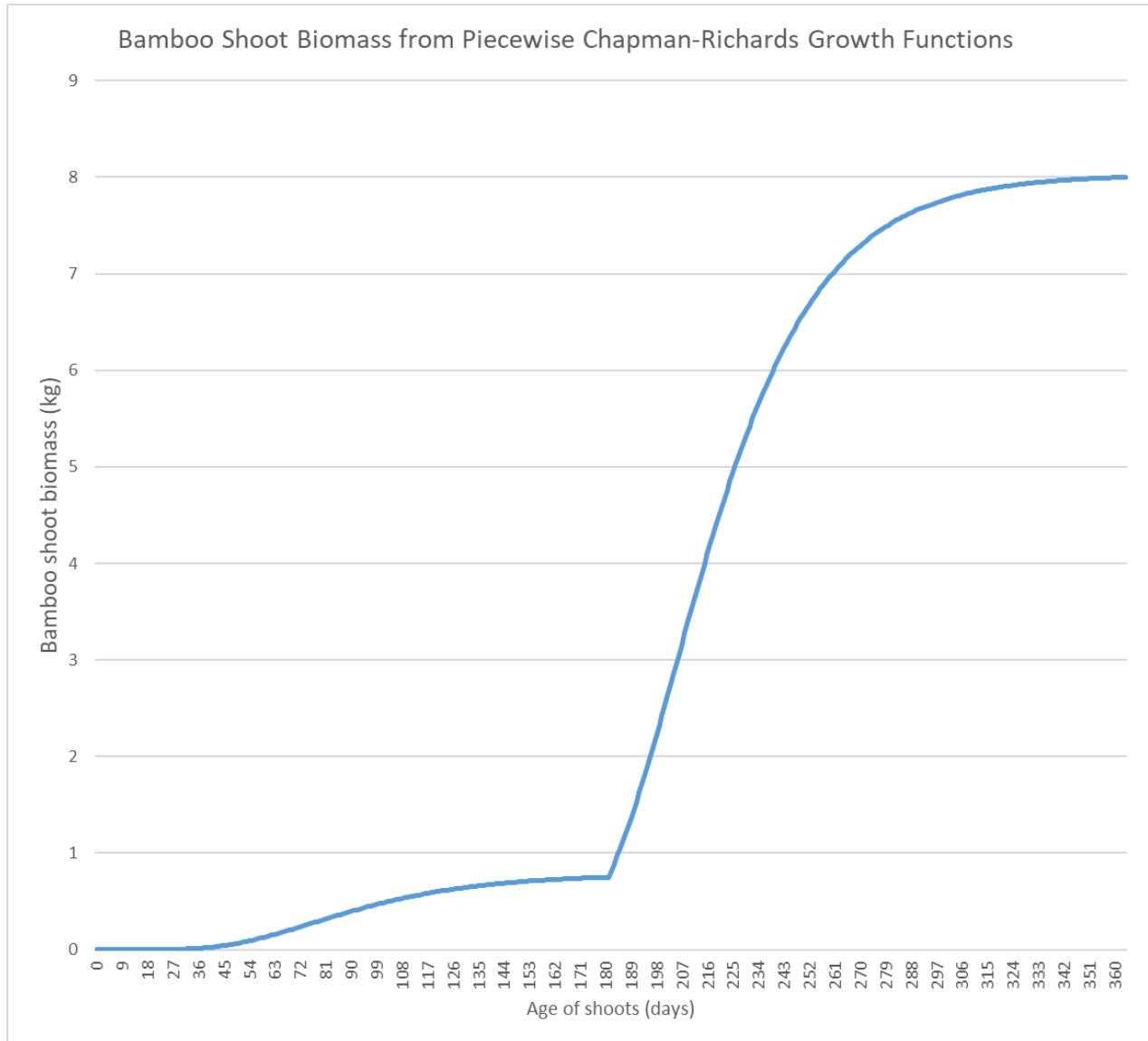
$$Q_b = \frac{1 - (Y_{ss}^{\max}/Y_b^{\max})^{1-v_b}}{e^{-\alpha_b t_{b0}} - (Y_{ss}^{\max}/Y_b^{\max})^{1-v_b} e^{-\alpha_b t_b^{\max}}}.$$

The parameter v_b is related to the inflection point of the Chapman-Richards growth function, where the time rate of change in bamboo stem biomass reaches its maximum. In Song et al. (2016), the biomass accumulation is fastest after in September following spring shooting. Since the bamboo growth year starts September 1, this means that the inflection point takes place the first month of the first full bamboo growth year (bamboo growth year age 1). We therefore set the year of inflection t_b^{infl} to be 1. We calculate v_b using:

$$v_b = 1 - Q_b e^{-\alpha_b t_b^{\text{infl}}}.$$

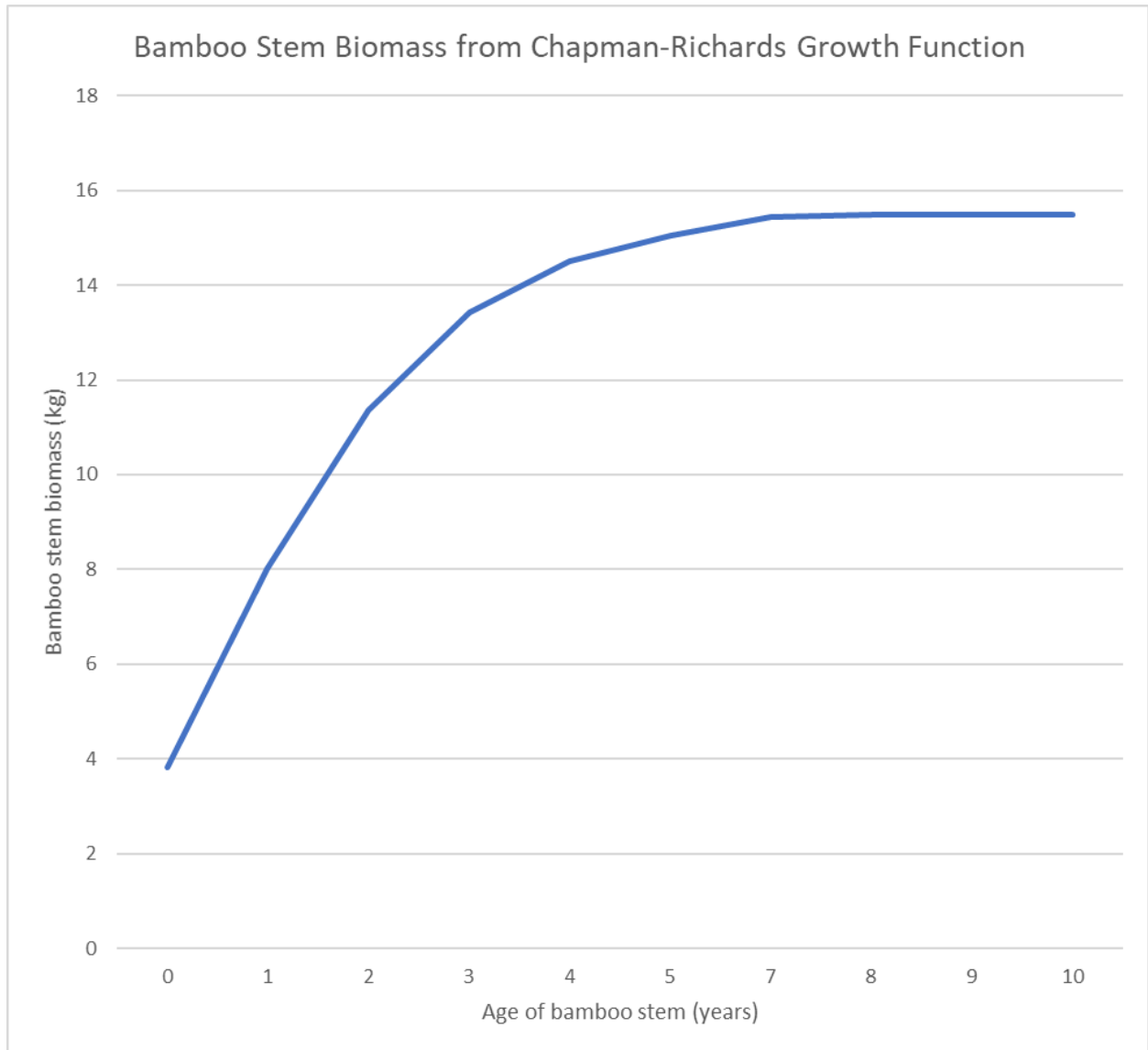
and iterating on v_b until convergence.

Figure A.1. Piecewise Chapman-Richards Growth Function for Bamboo Shoots



Notes: We use separate Chapman-Richards growth functions for winter shooting and spring shooting. The first day of winter shooting is September 1. Winter shooting is from September 1 until February 28. The number of winter shooting days is therefore 181 days. The spring shooting period starts on March 1 and ends on August 31, the last day of the bamboo growth year. The number of spring shooting days is 184 days.

Figure A.2. Chapman-Richards Growth Function for Bamboo Stem



Appendix B. Data and Parameters

B.1 Data on actual bamboo shoot and bamboo stem harvest

We collect data on actual bamboo shoot harvest and bamboo stem harvest decisions on 20m by 20m plots in Shanchuan Township and Sian Township in Zhejiang province in China. Our data set includes 35 plots over 2 bamboo growth years from March 1, 2017 to August 31, 2018: 20 plots in Sian Township and 15 plots in Shanchuan Township.

Our dataset includes the bamboo stem density for different sample plots in multiple years. However, number of shoots is seldomly reported unless under careful experimental design, whereas weights of shoots harvested is a commonly recorded variable. Our estimation of the number of shoots relies on converting the total weight of bamboo shoots into the number of bamboo shoots and the number of bamboo shoots harvested. The dilemma here is that we observe weight of shoots harvested, but do not observe either total amount of shoots or number of harvested shoots.

Ideally, we would like to convert the bamboo shoots harvested data and any estimated weight of bamboo shoots into the number of bamboo shoots harvested. Even though we can estimate the total possible weight of bamboo shoots, the actual weight of bamboo shoots would be different if some bamboo shoots were previously harvested that season. In addition, we cannot simply subtract the weight of bamboo shoots harvested earlier in the season from our estimate the total possible weight of bamboo shoots as a function of bamboo stems (culm), since those bamboo shoots that were harvested earlier in the season would have grown or changed in weight if they had not been harvested. So it would be ideal if we made the harvesting decision in terms of the number of bamboo shoots harvested, so that we can model the weight and change in weight of the remaining bamboo shoots.

We estimate the unobserved bamboo shoot state and control variables as follows. First, for each plot and each day, we convert the weight of bamboo shoots harvest into the number of bamboo shoots harvested by dividing the weight of bamboo shoots harvest by the bamboo shoot biomass per bamboo shoot that day of the year from Chapman-Richard's model for bamboo shoot growth, assuming that bamboo shoots start growing from the beginning of winter shooting.

We then impute the maximum number of bamboo shoots in the ground in the absence of bamboo shoot harvest for each sample plot in each bamboo growth year. To do so, we apply the

following model from Zheng (1998) to estimate the weight of bamboo shoots in the ground that remain after all the bamboo shoots have been harvested that season:

$$w_b = 0.0018 * d_b^{2.8637},$$

where w_b is weight of an individual bamboo shoot and d_b is its maximum diameter. As we do not have data on the maximum diameter of bamboo shoots, we use data on the diameter at breast height (DBH) of each newly grown bamboo stem that year to represent the diameter at breast height of bamboo shoots if they were to grow until the end of that season. For each sample plot and each year in our data set, we use data on the diameter at breast height (DBH) of newly grown bamboo stem, representing the diameter at breast height of bamboo shoots if they were to grow until the end of that season, to estimate the weight of a bamboo shoot if were to grow until the end of the season. Then, for each sample plot and each year, to calculate the weight of bamboo shoots on this sample plot that are not harvested, we take the sum over all the newly grown bamboo stems of the respective weights of a bamboo shoot if were to grow until the end of the season for that sample plot in that year. We convert the weight of bamboo shoots that are not harvested by the end of the season into the number of bamboo shoots that are not harvested by dividing the weight of bamboo shoots not harvested by the bamboo shoot biomass per bamboo shoot from Chapman-Richard's model for bamboo shoot growth, assuming that the unharvested bamboo shoots must have grown from the beginning of winter shooting until the last day of spring shooting.

For each plot, to calculate the number n_s of bamboo shoots at the beginning of the season, in the absence of any bamboo shoots harvest, we add the total number of bamboo shoots harvested over the season to the total number of bamboo shoots that remain unharvested at the end of the season.

For each day on each sample plot, we calculate the bamboo shoots harvest action variable a_s as the number of shoots harvested that day on that sample plot by the number n_s of bamboo shoots on that sample plot at the beginning of the season, in the absence of any bamboo shoots harvest.

We then calculate the number n_s of bamboo shoots for each day on each sample plot as the number n_s of bamboo shoots on that sample plot the previous day that season minus the number of bamboo shoots harvested on that sample plot on the previous day that season.

B.2. Bamboo shoot price

We collect data on daily bamboo shoots prices for Zhejiang province over the period January 1, 2014 to June 30, 2018 from the National Agricultural Products Business Information Public Service Platform operated by China's Ministry of Commerce (National Agricultural Products Business Information Public Service Platform, 2018). We use the shoots prices from the Zhebei Jiashan wholesale market since there are more days available, they are more consistent with price from sample plots, and also more detailed. Generally, there no bamboo shoots are sold in July, August, and September since these months are formation period of shoots underground. From mid June to mid October, there are no shoots on the wholesale market, and thus no price available.

We merge our daily shoots price data with our harvest data as follows. If any bamboo shoots harvest took place during a particular day on a particular sample plot, then we use the bamboo shoot price that the farmer received and recorded in the raw data we collected from the field trip to Zhejiang. This means the shoots price are not necessarily the same for the 2 townships due to different shoots harvest activities. This also means that even for the same township, there could be different price for the same day if harvest took place on one sample plot but not another. For sample plot-days for which no bamboo shoots harvest took place, use the daily bamboo shoots prices for Zhejiang province from the National Agricultural Products Business Information Public Service Platform (2018).

Since spring shoots are only marketable for 10 days, after which they become bitter and not marketable (LeBeau Bamboo Nursery, 2015; Tao et al. 2020), we set the bamboo shoot price for spring shoots to be 0 ¥/kg after 10 days of spring shooting in the numerical model.

Figures 1a and 1b plot histograms of the daily winter shoots price during winter shooting and the daily spring shoots price during spring shooting, respectively, over the years 2016-2018 for all plots in our data set.